



LED BACK-LIT FLAT PANEL

► **DESIGN** - LED BACK-LIT PANEL comes with a durable commercial grade housing resistant to rust and impact, anti-corrosion aluminum seamless rigid frame, anti-glare PS lens, and 0-10V dimmable driver with circuit overload, short circuit, and low-voltage protection, making it both safe and reliable. It is designed to operate on 120-277V circuits.

► **VARIETY** - The panels come in 1x4ft, 2x2ft and 2x4ft sizes.

► **COLOR AND POWER SELECTABLE** - You can choose either a 3,500K neutral white, 4,000K cool white or 5,000K daylight color temperature and change the power with a simple switch.

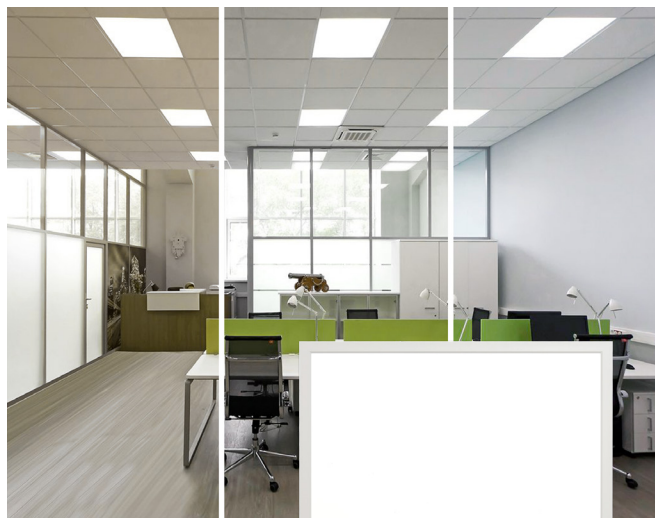
► **APPLICATION** - Perfect commercial or industrial solution for offices, hospitals, schools, retail, workshops, and many other applications. It is also Damp Locations rated.

► **ADVANTAGES** - With calculated lifespan up to 180,000 hours, these fixtures are made to last decades under normal operation! ASD provides a 5-year limited warranty along with UL and DLC Premium certifications to guarantee top quality products and safety!

► OPTIONS:

MODELS WITH MOTION SENSOR - The built-in magnet microwave motion sensor will turn off the fixture automatically when no motion is detected. The sensor settings can be easily adjusted using the remote control. You can also easily replace the built-in regular sensor with its NLS modification with ASD NLS APP smart control (sold separately).

MODELS WITH BATTERY BACK-UP - The built-in battery back-up provide 90 minutes of power in case of emergency.



PRODUCT PRESENTATION:

Model	Power	Sensor base	Voltage	Dimming	Lumens	CCT	Finish	Dimensions	Pre-installed	Certification
BLP										
ASD-BLP-14A40-4P	25/30/40W	-	120-277V	0-10V	5,293lm	3CCT (3,500/4,000/5,000K)	White	47-3/4" x 11-7/8" x 1-3/8"	-	UL(E473854), DLC Premium
ASD-BLP-22A30-4P	20/25/30W	-	120-277V	0-10V	3,633lm	3CCT (3,500/4,000/5,000K)	White	23-3/4" x 23-3/4" x 1-3/8"	-	UL(E473854), DLC Premium
ASD-BLP-24A40-4P	25/30/40W	-	120-277V	0-10V	5,025lm	3CCT (3,500/4,000/5,000K)	White	47-3/4" x 23-3/4" x 1-3/8"	-	UL(E473854), DLC Premium
ASD-BLP-24A50-4P	30/40/50W	-	120-277V	0-10V	6,341lm	3CCT (3,500/4,000/5,000K)	White	47-3/4" x 23-3/4" x 1-3/8"	-	UL(E473854), DLC Premium
ASD-BLP-24A67-4P	38/45/51/67W	-	120-277V	0-10V	10,642lm	5CCT (3,000/3,500/4,000/5,000/6,500K)	White	47-3/4" x 23-3/4" x 1-3/8"	-	UL(E473854), DLC Premium
BLP-MS WITH MOTION SENSOR										
ASD-BLP-22A30-MS	20/25/30W	-	120-277V	0-10V	3,633lm	3CCT (3,500/4,000/5,000K)	White	23-3/4" x 23-3/4" x 1-3/8"	Motion sensor	UL (E473854), DLC Premium
ASD-BLP-22A30-MS-2P	20/25/30W	-	120-277V	0-10V	3,633lm	3CCT (3,500/4,000/5,000K)	White	23-3/4" x 23-3/4" x 1-3/8"	Motion sensor	UL (E473854), DLC Premium
ASD-BLP-24A40-MS	25/30/40W	-	120-277V	0-10V	5,025lm	3CCT (3,500/4,000/5,000K)	White	47-3/4" x 23-3/4" x 1-3/8"	Motion sensor	UL (E473854), DLC Premium
BLP-EM WITH BATTERY BACK-UP										
ASD-BLP-22A30-EM	20/25/30W	-	120-277V	0-10V	3,633lm	3CCT (3,500/4,000/5,000K)	White	23-3/4" x 23-3/4" x 1-3/8"	Battery back-up 8W	UL (E473854), DLC Premium
ASD-BLP-24A40-EM	25/30/40W	-	120-277V	0-10V	5,025lm	3CCT (3,500/4,000/5,000K)	White	47-3/4" x 23-3/4" x 1-3/8"	Battery back-up 8W	UL (E473854), DLC Premium
BLP-QB-EM WITH Q-BASE AND BATTERY BACK-UP										
ASD-BLP-22A30-QB-8EM-2P	20/25/30W	Magnet base	120-277V	0-10V	3,633lm	3CCT (3,500/4,000/5,000K)	White	23-3/4" x 23-3/4" x 1-3/8"	Battery back-up 8W	UL (E473854), DLC Premium
ASD-BLP-24A40-QB-8EM-2P	25/30/40W	Magnet base	120-277V	0-10V	5,025lm	3CCT (3,500/4,000/5,000K)	White	47-3/4" x 23-3/4" x 1-3/8"	Battery back-up 8W	UL (E473854), DLC Premium

For detailed luminous flux information please refer to Annex 5.

For most up-to-date spec sheets please refer to asd-lighting.com

ASD LIGHTING CORP

E-mail: orders@asd-lighting.com | Web site: www.asd-lighting.com





LED BACK-LIT FLAT PANEL

TECHNICAL PARAMETERS:

Model	Max input current	Inrush current	Work environment	Operating temperature	Power factor	Surge protection	Housing	Lens	CRI
BLP									
ASD-BLP-14A40-4P	0.5 A	75 A	Damp location	-4°F to 122°F (-20°C to 50°C)	> 0.9	2.5 kV	Steel, Aluminum	PS	> 80
ASD-BLP-22A30-4P	0.35 A	75 A	Damp location	-4°F to 122°F (-20°C to 50°C)	> 0.9	2 kV	Steel, Aluminum	PS	> 80
ASD-BLP-24A40-4P	0.42 A	75 A	Damp location	-4°F to 122°F (-20°C to 50°C)	> 0.9	2 kV	Steel, Aluminum	PS	> 80
ASD-BLP-24A50-4P	0.42 A	75 A	Damp location	-4°F to 122°F (-20°C to 50°C)	> 0.9	2 kV	Steel, Aluminum	PS	> 80
ASD-BLP-24A67-4P	0.67 A	60 A	Damp location	-4°F to 122°F (-20°C to 50°C)	> 0.9	2 kV	Steel, Aluminum	PS	> 80
BLP-MS WITH MOTION SENSOR									
ASD-BLP-22A30-MS	0.35 A	75 A	Damp location	-4°F to 122°F (-20°C to 50°C)	> 0.9	2 kV	Steel, Aluminum	PS	> 80
ASD-BLP-22A30-MS-2P	0.35 A	75 A	Damp location	-4°F to 122°F (-20°C to 50°C)	> 0.9	2 kV	Steel, Aluminum	PS	> 80
ASD-BLP-24A40-MS	0.42 A	75 A	Damp location	-4°F to 122°F (-20°C to 50°C)	> 0.9	2 kV	Steel, Aluminum	PS	> 80
BLP-EM WITH BATTERY BACK-UP									
ASD-BLP-22A30-EM	0.35 A	75 A	Damp location	-4°F to 122°F (-20°C to 50°C)	> 0.9	2 kV	Steel, Aluminum	PS	> 80
ASD-BLP-24A40-EM	0.42 A	75 A	Damp location	-4°F to 122°F (-20°C to 50°C)	> 0.9	2 kV	Steel, Aluminum	PS	> 80
BLP-QB-EM WITH Q-BASE AND BATTERY BACK-UP									
ASD-BLP-22A30-QB-8EM-2P	0.35 A	75 A	Damp location	-4°F to 122°F (-20°C to 50°C)	> 0.9	2 kV	Steel, Aluminum	PS	> 80
ASD-BLP-24A40-QB-8EM-2P	0.42 A	75 A	Damp location	-4°F to 122°F (-20°C to 50°C)	> 0.9	2 kV	Steel, Aluminum	PS	> 80

DIMMING COMPATIBLE CONTROLS:

Brand	Lutron			Legrand
Models	NTSTV-DV	DS710	NFTV	RH4FBL3PW
	DVSTV	IP710		

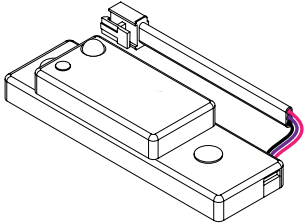
PACKAGE CONTENTS:

Description	Quantity
LED Back-Lit Flat Panel	1 (2 for 2P; 4 for 4P)
Box	1

ACCESSORIES (sold separately):

Microwave motion sensor magnet base
ASD-M2MW

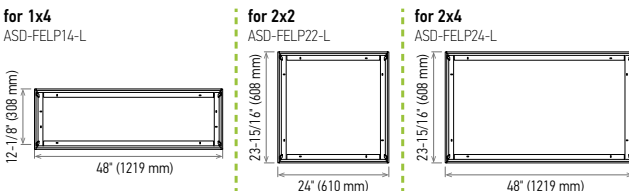
Microwave motion sensor NLS magnet base
ASD-M2MW-NLS



Surface mounting low frame
for 1x4
ASD-FELP14-L

for 2x2
ASD-FELP22-L

for 2x4
ASD-FELP24-L



ACCESSORY COMPATIBILITY LIST:

Accessories	Microwave motion sensor magnet base ASD-M2MW	Microwave motion sensor NLS magnet base ASD-M2MW-NLS	Surface mounting low frame for 1x4 panels ASD-FELP14-L	Surface mounting low frame for 2x2 panels ASD-FELP22-L	Surface mounting low frame for 2x4 panels ASD-FELP24-L
Models					
ASD-BLP-14A40-4P			•		
ASD-BLP-22A30-4P				•	
ASD-BLP-24A40-4P					•
ASD-BLP-24A50-4P					•
ASD-BLP-24A67-4P					•
ASD-BLP-22A30-MS				•	
ASD-BLP-22A30-MS-2P				•	
ASD-BLP-24A40-MS					•
ASD-BLP-22A30-EM					
ASD-BLP-24A40-EM					
ASD-BLP-22A30-QB-8EM-2P	•	•		•	
ASD-BLP-24A40-QB-8EM-2P	•	•			•

For most up-to-date spec sheets please refer to asd-lighting.com

ASD LIGHTING CORP

E-mail: orders@asd-lighting.com | Web site: www.asd-lighting.com

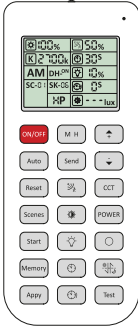




LED BACK-LIT FLAT PANEL

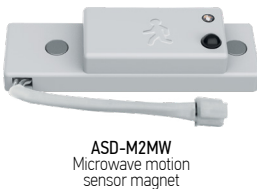
MOTION SENSOR INFORMATION

REMOTE CONTROL **ASD-06RC** sold separately



Button	Remarks	Button	Remarks	Button	Remarks
ON/OFF	ON/OFF Turn the sensor ON/OFF.	M H	Mounting height Adjust detection area/sensitivity levels according to real installation situations, higher or lower.	Up	The main functional buttons to adjust the factors to desired level.
Auto	Auto Enter "sensor mode" and perform previous settings.	Send	Send Memorize and send out the previous setting of individual parameters.	Down	Press + - button to dim light directly auto in non-detection mode.
Reset	Reset Enter "sensor mode" and perform the default settings.	Detection range	Also known as "sensitivity", 100 % means the highest sensitivity and longest distance. Use this button and the + - buttons to adjust.	CCT	CCT selectable Not applicable to this product.
Scenes	Shows current settings saved in remote.	Daylight sensor	The preset lux level at which motion will be detected. Use this button and the + - buttons to adjust.	POWER	Power Adjust brightness in both ON/OFF mode & sensor mode, minimum 10%, max 100%, each time this button is pressed it changes by 5%.
Start	Press this to begin scene setup.	Stand-by dimming	After hold time, the light will dim from 100 % to optional standby dimming levels. Use this button and the + - buttons to adjust.	Reserved button	Not applicable to this product.
Memory	Saves the scene settings.	Hold time	The period that light will stay illuminated 100 % after no motion is detected. Use this button and the + - buttons to adjust.	Daylight harvesting	Daylight harvesting function enabled or disabled.
Apply	Applies current scene settings to the fixture.	Stand-by period	The period after holdtime, during which the light keeps standby dimming level. Use this button and the + - buttons to adjust.	Test	Test button Press this button to test the sensor; it will temporarily change the hold time to 2s. This setting cannot be saved.

! Use the ASD-06RC remote control to put the ASD-M2MW-NLS sensor in pairing mode. Point the remote control at the sensor and press the "RESET" button.



ASD-M2MW
Microwave motion sensor magnet



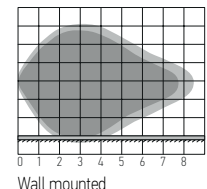
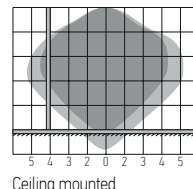
ASD-06RC
Remote control



ASD-M2MW-NLS
Microwave motion sensor NLS magnet



ASD-06RC
Remote control or smartphone



Well detected area
Possibly detected area

Highest mounting height is 16.4 ft (5 m). This figure indicates the maximum distance at the highest mounting height with 100 % sensitivity.

Specifications		Default setting
Detection area	25 %/50 %/75 %/100 %	100 %
Hold time	5 s/30 s/1 min/3 min/5 min/10 min/20 min/30 min	10 min
Daylight threshold	2 lux (0.2 fc)/10 lux (0.9 fc)/30 lux (2.8 fc)/50 lux (4.7 fc)/80 lux (7.4 fc)/120 lux (11.2 fc)/disable (for ASD-M2MW-NLS this value can be changed up to 2000 lux when controlled via the APP)	Disable
Standby period	0 s/10 s/30 s/1 min/5 min/10 min/30 min/+ ∞	0 s
Standby dimming level	10 %/20 %/30 %/50 %	10 %
Operating voltage	10.5 - 15 V	-
Operating current	< 30 mA	-
Mounting height	max 16.4 ft (5 m)	-
Detection range	> 13.1 ft (4 m)	-
Operating frequency	5.8 GHz ± 75 MHz	-
Transmitting power	< 0.3 mW	-

User notes:

1. Microwaves can penetrate walls or glass thinner than 0.8" but will be impaired if thicker than 0.8".
2. The driver voltage shall be stable and float within 10 %.
3. Detection area will be affected by speed of motion, mounting height and movement volume.
4. Conduct testing with adequate ambient lighting for best results.
5. Dimming performance differs when connected to different drivers; If the driver can't completely turn OFF, sensor can't either.
6. The first time powered ON sensor, light will be ON 100% for about 10S then dims to standby level or OFF.

Installation precautions:

1. Suitable for ceiling mount installation, adjust sensitivity properly if it's installed on side-wall because it gets more sensitive.
2. Make sure the microwave module is completely exposed.
3. The detection surface of the sensor module should be installed facing the detection area.

Application environment:

1. Suitable for indoor application, half/completely outdoor environment conditions might trigger the sensor.
2. Shall be mounted securely, to avoid any false triggers caused by movement of the fixture itself.
3. Keep the sensor module away from AC input and DC output to avoid high/low frequency signal interference.

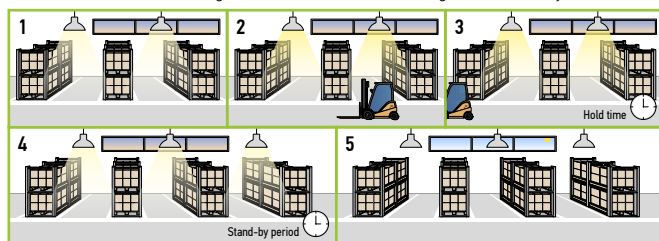
For most up-to-date spec sheets please refer to asd-lighting.com



LED BACK-LIT FLAT PANEL

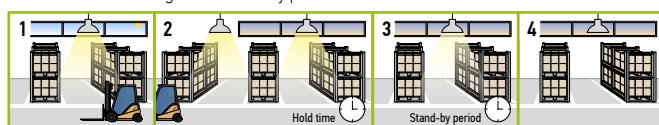
WITH DUSK/DAWN FUNCTION:

1. With insufficient ambient brightness, sensor turns on light and keeps it at standby dimming level even if there is no motion or presence.
2. When sensor detects motion or presence it will bring the light level up to 100 %.
3. After motion is no longer detected, fixture remains at 100 % for hold time.
4. After the preset hold time period, it will dim to the standby dimming level and maintain it indefinitely.
5. With sufficient ambient brightness, sensor will turn OFF light automatically.



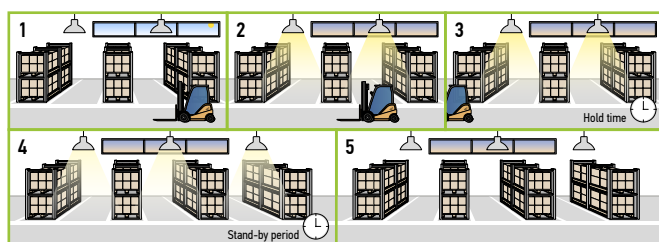
WITH DAYLIGHT DISABLED:

1. Sensor turns ON light when motion is detected.
2. Light will stay on after detecting motion for the desired hold time.
3. Sensor dims light to standby dimming level after hold time if there is still no motion.
4. Sensor turns OFF light after standby period.



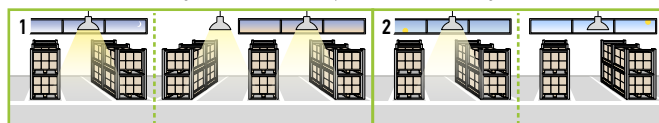
WITH DAYLIGHT THRESHOLD:

1. With sufficient daylight, the light remains OFF even after motion is detected.
2. With insufficient daylight, the sensor turns light ON when motion is detected.
3. After there's no motion detected, the sensor keeps light ON 100 % for holdtime.
4. After holdtime, sensor dims light to standby dimming level for standby period. If the standby period has been set as 0s, sensor turns light OFF automatically after holdtime.
5. The sensor turns OFF light automatically after the standby period when there's no motion detected.



DAYLIGHT HARVESTING:

1. When the ambient brightness is lower than the preset lux level, the sensor will automatically turn on the light and adjust the dimming according to changes in ambient brightness. As it gets darker outside, the fixtures will brighten, and as it gets brighter outside, the fixtures will dim.
2. When the ambient brightness exceeds the preset lux level, the light will turn OFF.

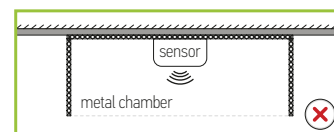
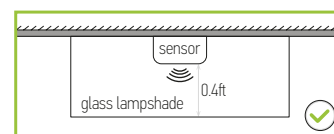
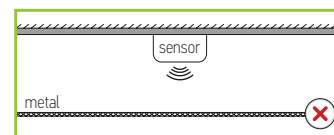


MICROWAVE MOTION SENSOR:

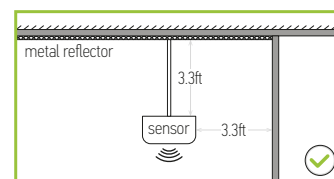
To avoid blocking the microwave emission, the microwave sensor can not be covered with metal materials, be sprayed with a coating of metal components, or have attached metal material or stickers etc.

The distance between the antenna and the glass (dielectric material) should be no less than 0.4 ft when the sensor is within the glass lampshade. Otherwise, the microwave motion sensor will not penetrate the glass easily.

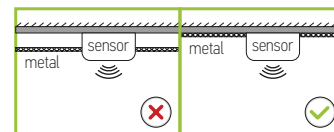
Avoid placing the sensor inside a metal chamber, this may cause a mis-trigger.



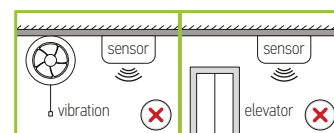
The sensor should not be placed in a small confined space. To avoid increasing the sensor detection range or abnormal operation, the sensor should be kept away from large areas of metal and glass reflectors (separation distance at least 3.3 ft). Reduce the detection area setting.



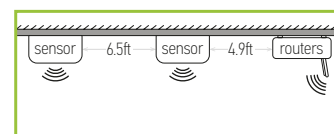
To avoid affecting the microwave signal transmission, the microwave antenna should be higher than the surrounding metal surface.



Any vibration or movement may trigger the sensor. Ensure the sensor is far from any constant movement.

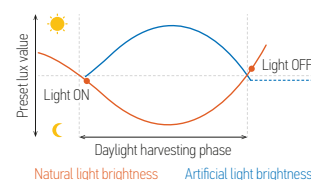


At least 2 m/6.5 ft distance between microwave sensors;
1.5 m/4.9 ft between the sensor and other wireless devices such as routers to avoid possible radio interference.



DAYLIGHT HARVESTING SETTING:

1. Adjust "daylight" value higher than 50lux.
2. Preset "standby period" 0S.
3. Press "daylight harvesting" button on remote control to activate.





LED BACK-LIT FLAT PANEL

BUILT-IN BATTERY BACK-UP INFORMATION

Model	Battery watts	Lumens in emergency mode	Battery capacity	Emergency mode	Charging time
ASD-BLP-22A30-EM	8W	1,265 lm	2,500 mAh	90 min	≥ 24 hours
ASD-BLP-24A40-EM	8W	1,286 lm	2,500 mAh	90 min	≥ 24 hours
ASD-BLP-22A30-QB-8EM-2P	8W	1,265 lm	2,500 mAh	90 min	≥ 24 hours
ASD-BLP-24A40-QB-8EM-2P	8W	1,286 lm	2,500 mAh	90 min	≥ 24 hours

ANNEX 1

Model	Watts	3,000K	3,500K	4,000K	5,000K	6,500K
ASD-BLP-14A40-4P	25W	-	3,385lm	3,562lm	3,478lm	-
	30W	-	3,944lm	4,169lm	4,036lm	-
	40W	-	4,977lm	5,293lm	5,137lm	-
ASD-BLP-22A30-4P ASD-BLP-22A30-MS ASD-BLP-22A30-MS-2P ASD-BLP-22A30-EM ASD-BLP-22A30-QB-8EM-2P	20W	-	2,543lm	2,681lm	2,629lm	-
	25W	-	3,068lm	3,273lm	3,177lm	-
	30W	-	3,528lm	3,761lm	3,633lm	-
ASD-BLP-24A40-4P ASD-BLP-24A40-MS ASD-BLP-24A40-EM ASD-BLP-24A40-QB-8EM-2P	25W	-	3,288lm	3,399lm	3,331lm	-
	30W	-	3,839lm	3,983lm	3,891lm	-
	40W	-	4,988lm	5,200lm	5,025lm	-
ASD-BLP-24A50-4P	30W	-	4,139lm	4,280lm	4,205lm	-
	40W	-	5,178lm	5,347lm	5,304lm	-
	50W	-	6,250lm	6,542lm	6,341lm	-
ASD-BLP-24A67-4P	38W	6,538lm	6,611lm	6,613lm	6,552lm	6,430lm
	45W	7,420lm	7,516lm	7,538lm	7,450lm	7,271lm
	51W	8,256lm	8,394lm	8,347lm	8,380lm	8,209lm
	67W	10,571lm	10,786lm	10,836lm	10,731lm	10,407lm

INSTALLATION GUIDE

IMPORTANT SAFETY INFORMATION:

Please read all the instructions below before installation!

- ▶ Make sure that the supply voltage corresponds to the rated product voltage.
- ▶ The product must be installed by a qualified electrician in accordance with the National Electrical Code and corresponding local codes.
- ▶ If the product is damaged, do not use it.

⚠ WARNING

Risk of personal injury – read and follow all warnings and installation instructions. Keep or give to the owner for future reference.

Risk of cuts: Wear gloves to prevent cuts or abrasions when removing from carton, handling, installing, and maintaining this product.

Risk of electric shock: This product must be installed in accordance with the applicable installation code by a person familiar with the construction and operation of the product and the hazards involved.

Risk of Fire: Minimum 194°F supply conductors. Consult a qualified electrician to ensure correct branch circuit conductor.

ASD® assumes no responsibility for claims arising out of improper or careless installation or handling of this product.

STEP-BY-STEP GUIDE FOR ADDING NEW SENSORS TO THE ASD NLS APP:

1. Download the ASD NLS App from the App Store (for iOS) or from the Google Play Store (for Android) using the QR codes below.

[ASD NLS APP download Android](#)

[ASD NLS APP download iOS](#)



2. **Connect the sensor to a fixture and check pairing mode:**
 - If the fixture is blinking: It's already in pairing mode. Skip to Step 4.
 - If the fixture is **not** blinking: Go to Step 3 to manually enter pairing mode.
3. **Manually put the Sensor in pairing mode:**
 - Use the ASD-06RC remote control.
 - Point the remote at the sensor and press the "RESET" button.
 - The fixture will blink, indicating the sensor is in pairing mode.
 - If the blinking stops after a few seconds, the sensor is still in pairing mode.
4. **Adding the Sensor to the ASD NLS App:**
 - Ensure your mobile device has Bluetooth enabled and is connected to a Wi-Fi network.
 - Open the ASD NLS App.
 - If opening the app for the first time, follow the on-screen steps to create a project (for detailed instructions on project and area setup, scan the QR code below).

[Smartphone manual](#)



- Select your project version and enter the project details.
 - If unsure about the mesh network mode, select "Single Mesh Network".
 - Follow the prompts to create areas within the project.
 - Enter area names until you reach the "Zone" setup.
 - Tap the icon in the top right corner to exit the screen.
5. Go to device management after you have created the project.
 6. Select the area that you'd like to add devices to.
 7. Tap the "+" button in the top right corner to get to the add device section.
 8. Wait for the App to detect the Sensor. Once it appears, tap the "Add" button.
 9. Tap the "+" button near the Sensor, then tap the "Add" button and wait for the sensor to load.
 10. Tap the "Done" button at the top right corner, then select the Sensor and tap the "Add" button in the bottom right corner to finish adding the sensor to the App.

For most up-to-date spec sheets please refer to asd-lighting.com

ASD LIGHTING CORP

E-mail: orders@asd-lighting.com | Web site: www.asd-lighting.com

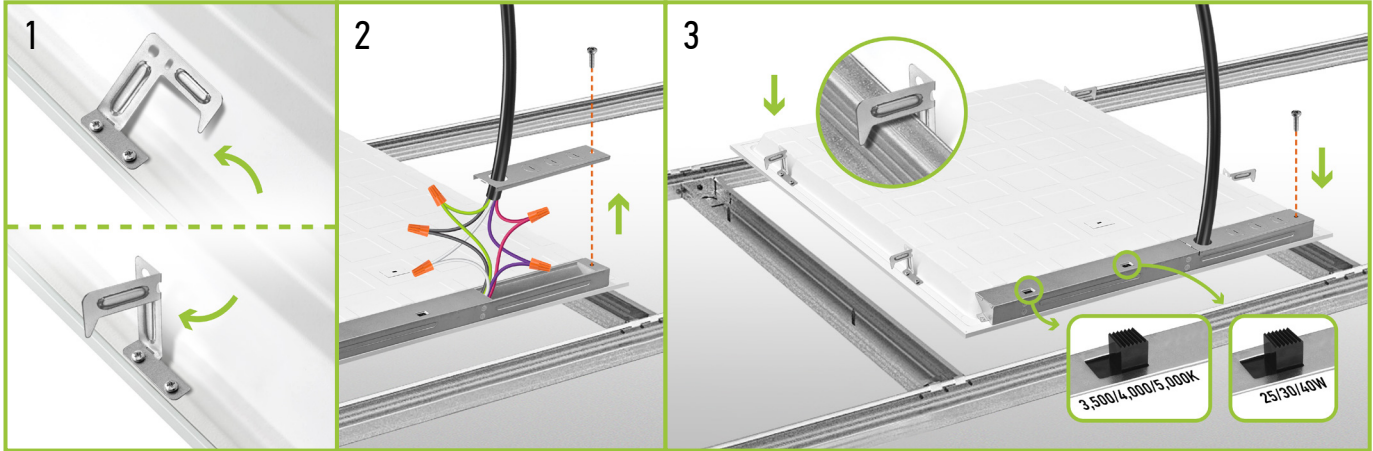




LED BACK-LIT FLAT PANEL

RECESSED MOUNT INSTALLATION:

1. Lift all mounting clips along the edges of the panel. Turn the mounting clip head.
2. Remove the knockout hole on the driver box with a screwdriver, remove screw and take out the driver cover. Connect the wires inside the driver box: Black to Black, White to White, Green to Green.
3. Cover the driver box and tighten it with a screwdriver, finish connection.



SURFACE MOUNT INSTALLATION:

ASD-FELP14-L

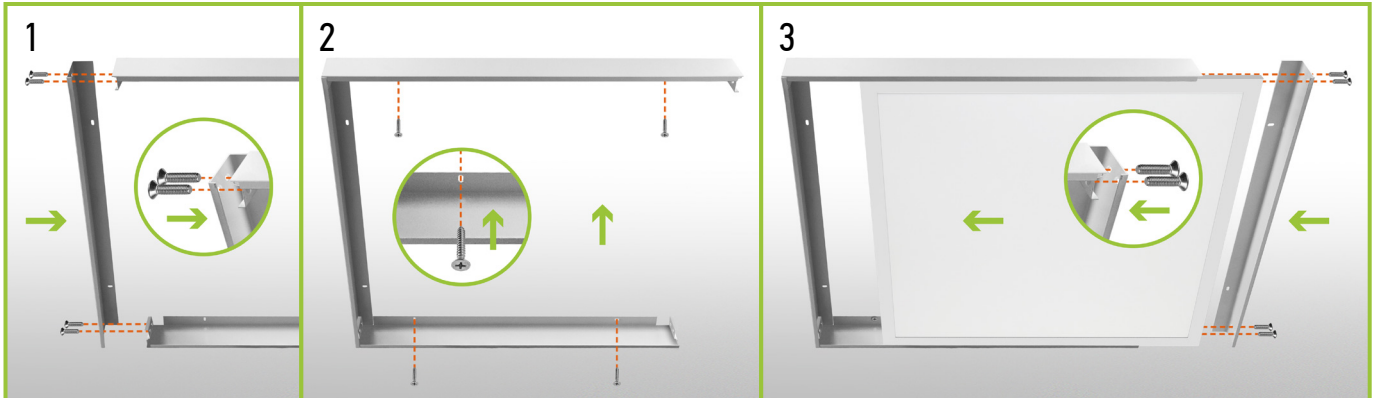
ASD-FELP22-L

ASD-FELP24-L

sold separately

1. Connect 3 pieces of the frame to the ceiling using four screws.
2. Connect the panel wires as shown in electrical schematic diagram and insert panel into frame.
3. Attach the fourth piece and secure with screws. Power on to ensure installation is complete.

* Must remove earthquake hook before installing surface mount frame.



For most up-to-date spec sheets please refer to asd-lighting.com

ASD LIGHTING CORP

E-mail: orders@asd-lighting.com | Web site: www.asd-lighting.com



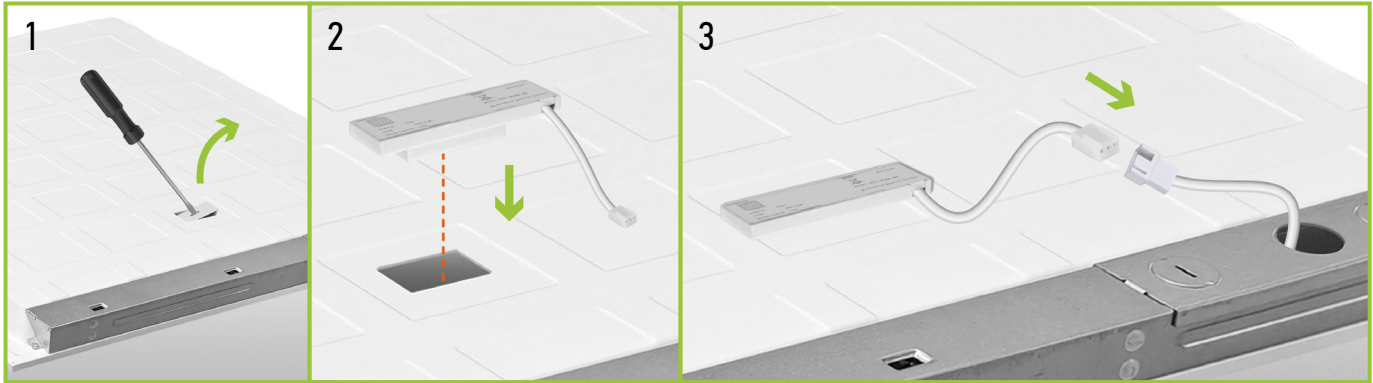


LED BACK-LIT FLAT PANEL

MOTION SENSOR INSTALLATION:

ASD-M2MW-WH
ASD-M2MW-NLS
sold separately

1. Locate the designated knockout area for the motion sensor. Carefully remove the knockout plate along the cut line.
2. Securely install the motion sensor in the prepared opening.
3. Connect the sensor to the driver following the Electrical Schematic Diagram.



ORDERING INFORMATION

Model	Product dimensions	Weight	Pcs. (pack) per carton	Carton size	Carton weight	UPC	GTIN 14 in carton
BLP							
ASD-BLP-14A40-4P	47-3/4" x 11-7/8" x 1-3/8"	18 lbs (8.2 kg)	4 (1)	49.1" x 7.7" x 15.6"	24.3 lbs	810190200254	-
ASD-BLP-22A30-4P	23-3/4" x 23-3/4" x 1-3/8"	15.4 lbs (7 kg)	4 (1)	25" x 27.5" x 7.7"	20.1 lbs	81012811447	-
ASD-BLP-24A40-4P	47-3/4" x 23-3/4" x 1-3/8"	31.3 lbs (14.2 kg)	4 (1)	49.1" x 27.5" x 7.7"	37.7 lbs	81012811448	-
ASD-BLP-24A50-4P	47-3/4" x 23-3/4" x 1-3/8"	32.6 lbs (14.8 kg)	4 (1)	49.2" x 6.2" x 25.6"	36.7 lbs	81012811704	-
ASD-BLP-24A67-4P	47-3/4" x 23-3/4" x 1-3/8"	31 lbs (14.1 kg)	4 (1)	49.1" x 27.5" x 7.7"	38 lbs	81019020009	-
BLP-MS WITH MOTION SENSOR							
ASD-BLP-22A30-MS	23-3/4" x 23-3/4" x 1-3/8"	4.4 lbs (2 kg)	4	28.3" x 25.4" x 8.6"	20.1 lbs	81012811580	10810128115800
ASD-BLP-22A30-MS-2P	23-3/4" x 23-3/4" x 1-3/8"	4.4 lbs (2 kg)	4 (2)	28.3" x 25.4" x 8.6"	20.1 lbs	81012811949	10810128119495
ASD-BLP-24A40-MS	47-3/4" x 23-3/4" x 1-3/8"	8.2 lbs (3.7 kg)	4	28.3" x 49.5" x 8.6"	39.2 lbs	81012811581	10810128115817
BLP-EM WITH BATTERY BACK-UP							
ASD-BLP-22A30-EM	23-3/4" x 23-3/4" x 1-3/8"	5.1 lbs (2.3 kg)	4	24.9" x 7.3" x 24.6"	22.6 lbs	81012811450	10810128114506
ASD-BLP-24A40-EM	47-3/4" x 23-3/4" x 1-3/8"	8.8 lbs (4 kg)	4	49" x 7.3" x 24.6"	39.4 lbs	81012811451	10810128114513
BLP-QB-EM WITH Q-BASE AND BATTERY BACK-UP							
ASD-BLP-22A30-QB-8EM-2P	23-3/4" x 23-3/4" x 1-3/8"	5.5 lbs (2.5 kg)	4 (2)	28.3" x 25.4" x 8.6"	13.1 lbs	81012811918	20810128119188
ASD-BLP-24A40-QB-8EM-2P	47-3/4" x 23-3/4" x 1-3/8"	9.1 lbs (4.1 kg)	4 (2)	28.3" x 49.5" x 8.6"	21.8 lbs	81012811919	20810128119195

ACCESSORIES:

Model	Product dimensions	Pcs. in middle box	Middle box size	Middle box weight	Pcs. per carton	Carton size	Carton weight	UPC	GTIN 14 in middle box	GTIN 14 in carton
ASD-M2MW-WH	2-9/16" x 13/16" x 5/8"	10	10.4" x 3.2" x 1.7"	0.4 lbs	120	11.2" x 7.5" x 10.2"	11.4 lbs	81012811922	10810128119228	20810128119225
ASD-M2MW-NLS	2-5/8" x 13/16" x 1/2"	10	10.4" x 3.2" x 1.7"	0.8 lbs	120	11.2" x 7.5" x 10.2"	10.1 lbs	81012811703	20810128117030	30810128117037
ASD-FELP14-L	48" x 12-1/8" x 1-15/16"	-	-	-	9	48.8" x 5.9" x 7.7"	23.4 lbs	819201021574	-	10819201021571
ASD-FELP22-L	24" x 23-15/16" x 1-15/16"	-	-	-	9	25.2" x 6.5" x 7.7"	28.8 lbs	81920102158	-	10819201021588
ASD-FELP24-L	48" x 23-15/16" x 1-15/16"	-	-	-	9	48.8" x 5.9" x 7.7"	45.2 lbs	81920102159	-	10819201021595

For most up-to-date spec sheets please refer to asd-lighting.com
ASD LIGHTING CORP

E-mail: orders@asd-lighting.com | Web site: www.asd-lighting.com
