

Installation Instructions

NOXLV-4

4" Onyx 12VAC Low Voltage LED Reflector

READ PRIOR TO ATTEMPTING INSTALLATION
ALWAYS TURN OFF MAIN POWER BEFORE INSTALLATION
INSTALLATION SHOULD BE CARRIED OUT BY YOUR LOCAL ELECTRICIAN

⚠ WARNING: Risk of fire or electric shock. LED Retrofit Kit installation requires knowledge of luminaire electrical systems. If not qualified, do not attempt installation. Contact a qualified electrician.

⚠ AVERTISSEMENT: Risque d'incendie ou de choc électrique. Installation du Kit d'adaptation LED nécessite la connaissance des systèmes électriques luminaires. Si non qualifié, ne essayez pas de l'installation. Contactez un électricien qualifié.

⚠ WARNING: Risk of fire or electric shock. Install this kit only in luminaires that have the construction features and dimensions shown in the photographs and/or drawings and where the input rating of the retrofit kit does not exceed the input rating of the luminaire.

⚠ AVERTISSEMENT: Risque d'incendie ou de choc électrique. Installez ce kit dans des luminaires qui ont les caractéristiques de construction et dimensions indiquées dans les photographies et / ou dessins et où la capacité d'entrée de la trousse de réparation ne dépasse pas la capacité d'entrée du luminaire.

⚠ WARNING: To prevent wiring damage or abrasion, do not expose wiring to edges of sheet metal or other sharp objects.

⚠ AVERTISSEMENT: Pour éviter d'endommager le câblage ou à l'abrasion, ne pas exposer le câblage aux bords de tôle ou d'autres objets pointus.

DO NOT MAKE OR ALTER ANY OPEN HOLES IN AN ENCLOSURE OF WIRING OR ELECTRICAL COMPONENTS DURING KIT INSTALLATION.

NE PAS FAIRE OU MODIFIER LES TROUS OUVERTS DANS UNE ENCEINTE DE CÂBLAGE OU LES COMPOSANTS ÉLECTRIQUES LORS DE L'INSTALLATION DU KIT.

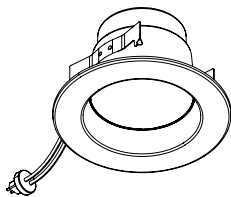
**THE RETROFIT KIT IS ACCEPTED AS A COMPONENT OF A LUMINAIRE WHERE THE SUITABILITY OF THE COMBINATION SHALL BE DETERMINED BY CSA OR AUTHORITIES HAVING JURISDICTION
LE KIT DE RATTRAPAGE EST ACCEPTÉE COMME UNE COMPOSANTE D'UN LUMINAIRE OÙ LA PERTINENCE DE LA COMBINAISON SERA DÉTERMINÉE PAR LA CSA OU LES AUTORITÉS JURISDICTION**

**THIS DEVICE IS NOT INTENDED FOR USE WITH EMERGENCY EXITS
NE CONVIENT PAS AUX SORTIES DE SECOURS**

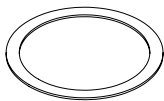
**USE ONLY WITH MINIMUM LAMP COMPARTMENT 4-3/8" (111MM) IN DIAMETER X 4-3/4" (120.65MM) IN DEPTH
UTILISEZ UNIQUEMENT AVEC COMPARTIMENT DE LAMPE MINIMUM 4-3/8" (111MM) EN DIAMÈTRE X 4-3/4" (120.65MM) EN HAUTEUR**



PACKAGING CONTENTS



Retrofit



Gasket



LED Lamp Replacement Marking Sticker

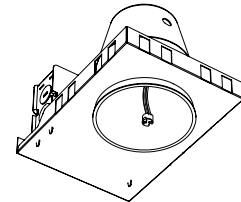


HOUSING DIMENSIONS

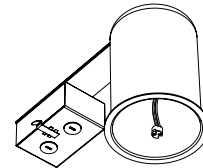
Min. Diameter	Min. Height
4-3/8" (111mm)	4-3/4" (120.65mm)

Install this kit only in luminaires that have the construction features and dimensions described in these instructions, and where the input rating of the retrofit kit does not exceed the input rating of the luminaire.

Refer to correlation label of luminaire and/or specification sheet at www.NoraLighting.com



New Construction



Remodel

INSTALLATION INSTRUCTIONS

⚠ TURN OFF MAIN POWER BEFORE INSTALLATION

⚠ DO NOT CONNECT THIS LUMINAIRE TO LINE VOLTAGE (120V)

1. If any, remove existing trim and the lamp.
2. Connect luminaire's adapter to the compatible housing's GU5.3 base socket. (Figure 1)
3. Carefully route wires into the housing and squeeze friction blades on trim and carefully push the fixture into the housing. (Figure 2)

Figure 1

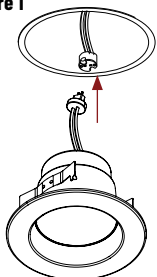
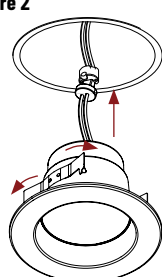


Figure 2



SELECTING COLOR TEMPERATURE

NOTE: Retrofit is preset to 3000K and may have been changed in shipping / handling. Select color temperature prior to installation.

1. Color temperature can be changed with five position switch located on top of the driver.

