



LED DOUBLE RING FLUSHMOUNT WITH RGBW

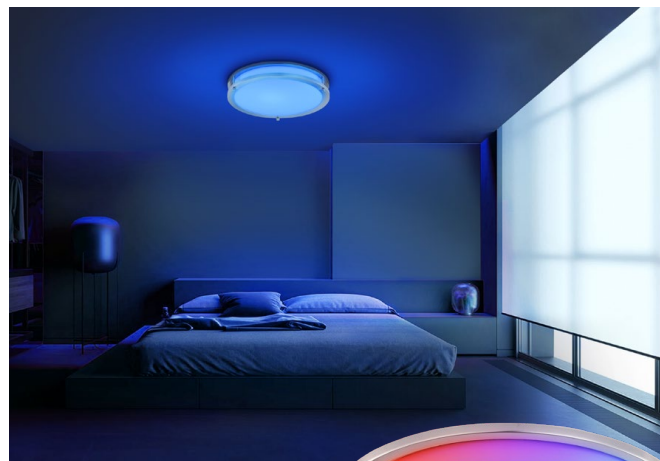
► **DESIGN** - LED DOUBLE RING FLUSHMOUNT WITH RGBW has a modern, multipurpose design and a stylish look with efficient lighting. Durable housing resistant to rust and impact along with an acrylic lens provide many years of use. It is designed to operate on 120V circuits.

► **RGBW** - The fixture has RGBW design with ASD SMART APP control and the remote controller. You can easily select Red, Green, Blue, White (2,700K-6,500K) colors or its' combinations, having 16.7 million colors in total. You can also choose lighting patterns and set up a schedule, having a great variety of good looking effects. All of it is easily controlled by ASD SMART APP on your Smartphone. The fixture is also compatible with Alexa and Google Assistant.

► **DIMMING** - Smooth triac dimming capabilities ranging from 10% to 100% with modern LED dimmers allow you to control the look and feel of your space.

► **APPLICATION** - The LED DOUBLE RING FLUSHMOUNT provides bright, yet smooth lighting for your family room, bedroom, hallway, corridor, or any other common areas. 2.75" and 3.5" mounting holes help you expand your installation options. This fixture is also Damp Locations rated.

► **ADVANTAGES** - With a lifespan of 50,000 hours, these fixtures are made to last decades under normal operation! ASD provides a 5-year limited warranty along with ETL certifications to guarantee top quality products and safety!



PRODUCT PRESENTATION:

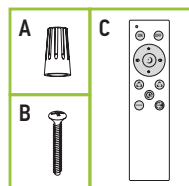
Model	Size	Power	Voltage	Dimming	Lumens	CCT	Finish	Dimensions	Certification
ASD-LFMDR-14D21SM-RGBW-NK	14 inch	21W	120 V	SMART APP + RC	1,429lm	Red-Green-Blue-2,700-6,500 K	Nickel	13-3/4" x 13-3/4" x 3-9/16"	ETL (4001256)
ASD-LFMDR-16D24SM-RGBW-NK	16 inch	24W	120 V	SMART APP + RC	1,575lm	Red-Green-Blue-2,700-6,500 K	Nickel	15-3/4" x 15-3/4" x 3-7/8"	ETL (4001256)
ASD-LFMDR-18D28SM-RGBW-NK	18 inch	28W	120 V	SMART APP + RC	1,844lm	Red-Green-Blue-2,700-6,500 K	Nickel	17-11/16" x 17-11/16" x 4-1/16"	ETL (4001256)

TECHNICAL PARAMETERS:

Model	Work environment	Operating temperature	Power factor	Surge protection	Housing	Lens	CRI
ASD-LFMDR-14D21SM-RGBW-NK	Damp location	-4°F to 104°F (-20°C to 40°C)	> 0.8	2 kV	Steel	Acrylic	> 80
ASD-LFMDR-16D24SM-RGBW-NK	Damp location	-4°F to 104°F (-20°C to 40°C)	> 0.8	2 kV	Steel	Acrylic	> 80
ASD-LFMDR-18D28SM-RGBW-NK	Damp location	-4°F to 104°F (-20°C to 40°C)	> 0.8	2 kV	Steel	Acrylic	> 80

PACKAGE CONTENTS:

Description	Quantity
LED Double Ring Flushmount with RGBW	1
Wire nut (A)	3
Screw (B)	2
Remote control (batteries sold separately) (C)	1
Box	1



ORDERING INFORMATION

Model	Product dimensions	Weight	Pcs. per carton	Carton size	Carton weight	UPC	GTIN 14
ASD-LFMDR-14D21SM-RGBW-NK	13-3/4" x 13-3/4" x 3-9/16"	2.1 lbs (1.0 kg)	4	16.7" x 15.9" x 15.9"	16.3 lbs	81012811886	10810128118863
ASD-LFMDR-16D24SM-RGBW-NK	15-3/4" x 15-3/4" x 3-7/8"	3.1 lbs (1.4 kg)	2	17.7" x 9.1" x 17.7"	11.5 lbs	81012811887	10810128118870
ASD-LFMDR-18D28SM-RGBW-NK	17-11/16" x 17-11/16" x 4-1/16"	3.2 lbs (1.4 kg)	2	20.1" x 9.8" x 20.1"	12.5 lbs	81012811888	10810128118887

For most up-to-date spec sheets please refer to asd-lighting.com

ASD LIGHTING CORP

E-mail: orders@asd-lighting.com | Web site: www.asd-lighting.com





LED DOUBLE RING FLUSHMOUNT WITH RGBW



ASD Smart is an innovative solution for seamless control of lighting fixtures from ASD Lighting. With the mobile app, users can easily adjust brightness, change color temperature, and utilize RGB lighting to create the perfect ambience.

The App supports **group control**, allowing multiple lights to work in sync, as well as the creation of **personalized lighting scenarios**. For added convenience, it integrates with **voice assistants** like Amazon Alexa, enabling hands-free lighting control.

This smart solution enhances **convenience**, **innovation**, and **energy efficiency** wherever it is used.

ASD SMART APP
download Android



ASD SMART APP
download iOS



Smartphone manual



FIXTURE CONTROL

Set brightness, change color temperature, use RGB lighting.



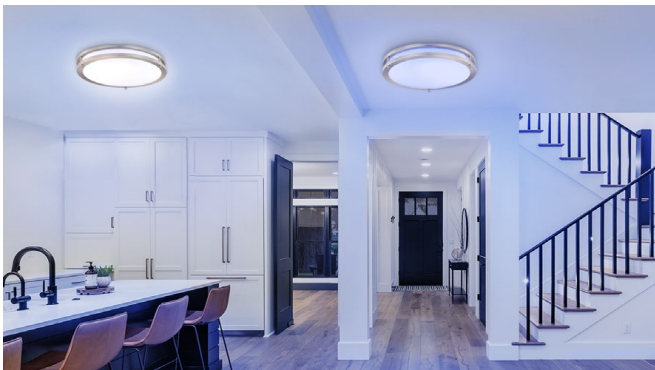
CUSTOM SCENARIOS

Allows you to apply scenes, scenarios or to create your own.



SCHEDULING

Set your lights to turn on and off exactly when you need them - by time of day and day of the week.



GROUP CONTROL

Control multiple lights as one - group devices together for seamless, synchronized lighting



For most up-to-date spec sheets please refer to asd-lighting.com

ASD LIGHTING CORP

E-mail: orders@asd-lighting.com | Web site: www.asd-lighting.com





LED DOUBLE RING FLUSHMOUNT WITH RGBW

INSTALLATION GUIDE

IMPORTANT SAFETY INFORMATION:

Please read all the instructions below before installation!

- ▶ Make sure that the supply voltage corresponds to the rated product voltage.
- ▶ The product must be installed by a qualified electrician in accordance with the National Electrical Code and corresponding local codes.
- ▶ If the product is damaged, do not use it.

STEP-BY-STEP GUIDE FOR ADDING NEW DEVICES TO THE ASD SMART APP:

1. Download the ASD SMART APP from the Apple App Store (for iOS) or from the Google Play Store (for Android) using the QR codes below.
2. Connect the fixture to a power source, then prepare the fixture for pairing:
 - If the fixture is blinking: It's already in pairing mode. Skip to Step 4.
 - If the fixture is not blinking: Go to Step 3 to manually enter pairing mode.
3. Manually put the fixture in pairing mode:
 - Turn the fixture on and off 5 times. The interval between turning on and off should be at least one second.
 - The fixture will start blinking, signaling it's in pairing mode. The blinking might stop after a few seconds, but it will still be in pairing mode.
4. Adding the fixture to the App:
 - Ensure Bluetooth is enabled and your phone is connected to a Wi-Fi network with internet access.
 - Open the ASD SMART APP.
 - At the top of the App, select the area where the new fixture will be located.
 - Tap the "+" button in the top right corner, then select "Add Device".
 - Wait for the App to detect the fixture. Once it appears, tap "Add".
 - Enter your Wi-Fi credentials when prompted.
 - Once the fixture is successfully added, tap "Done" to complete the setup.

⚠ WARNING

Risk of personal injury – read and follow all warnings and installation instructions. Keep or give to the owner for future reference.

Risk of cuts: Wear gloves to prevent cuts or abrasions when removing from carton, handling, installing, and maintaining this product.

Risk of electric shock: This product must be installed in accordance with the applicable installation code by a person familiar with the construction and operation of the product and the hazards involved.

Risk of Fire: Minimum 194°F supply conductors. Consult a qualified electrician to ensure correct branch circuit conductor.

ASD® assumes no responsibility for claims arising out of improper or careless Installation or handling of this product.

FAQ:

1. I can't see the device in the App:

Ensure the smart device is plugged in, Wi-Fi and Bluetooth are enabled on your mobile device, and your network hasn't reached its device limit.

If you're still having trouble:

- Keep the fixtures in pairing mode and reset your router.
- Verify that your Wi-Fi network is 2.4 GHz, as smart devices require this frequency.
- Ensure your smart device is within Wi-Fi range (approximately 5-10ft indoors).

2. "Time out" error when connecting the device:

- On the App homepage, tap the "Me" icon in the lower right corner.
- In the upper right corner of the next screen, tap the "Settings" icon.
- Scroll to the bottom of the settings page to check the current storage occupied by the App cache.
- Close the App, reboot your phone, and try re-adding the device.

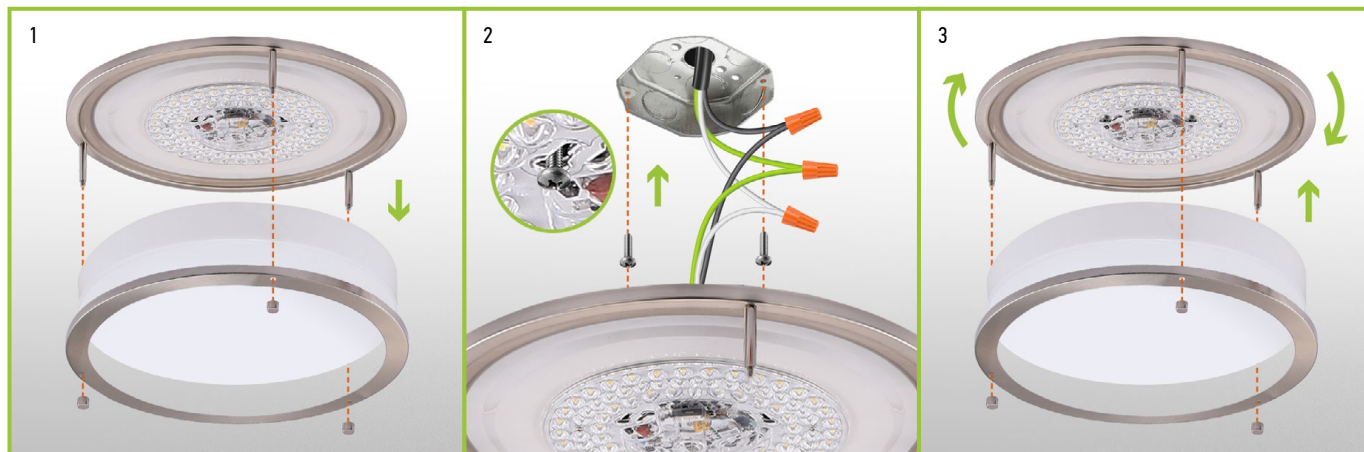
3. I can't control multiple devices at once.

Ensure you are not attempting to group different types of devices (for example, a wall sconce and a security camera). Only devices of the same type can be grouped and controlled together.

To learn more about the App, check out the instructions at this link.

INSTALLATION STEPS:

1. Unscrew three cap nuts counter-clockwise, remove the metal ring and the lens.
2. Attach two screws to the outlet box. Connect the wires: Black to Black, White to White, Ground to Ground. Carefully tuck all the wires back into the outlet box.
3. Place the fixture pan over the outlet box and feed fixture screws through keyhole slots. Rotate the fixture pan clockwise until screws lock into the narrow end of the keyhole slots and tighten screws firmly. Secure the lens and the metal ring to the fixture pan using three cap nuts.



For most up-to-date spec sheets please refer to asd-lighting.com

ASD LIGHTING CORP

E-mail: orders@asd-lighting.com | Web site: www.asd-lighting.com





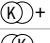











LED DOUBLE RING FLUSHMOUNT WITH RGBW

REMOTE CONTROL:



Button	Remarks
	Total ON
	Total OFF
	Light night mode
	Bright add
	Bright sub
	Temper add
	Temper sub
	Temper switch
	Rainbow switch
	Countdown
	Scene switch
	RGB gradual loop

For most up-to-date spec sheets please refer to asd-lighting.com

ASD LIGHTING CORP

E-mail: orders@asd-lighting.com | Web site: www.asd-lighting.com

