

NEW PRODUCT ANNOUNCEMENT

NORA
LIGHTING

M1+ SERIES

1" 120V Can-less Downlights (No Housing Required!)

M1+ is an upgrade to our first generation M1 1" downlights. From 12V input to 120V input with Triac or ELV dimming. From 100 lumens to 600 delivered lumens. Die-cast trims come standard in round matte black or matte powder white finishes. Luminaires include a pre-wired junction box, no housing is required. IC Air-Tight rated luminaires are simple to install.

FEATURES

- No housing required - IC Air-Tight rated
- Easy installation for remodel or new construction applications
- 600lm / 9W LED Light Engine
- Dedicated CCT (2700K or 3000K) at 90+ CRI
- 120V input; Triac or ELV dimming
- ENERGY STAR certified
- cETLus Listed for Wet Location
- Certified to the high efficacy requirements of California Title 24 JA8-2019



M1+ 1" 120V LED RECESSED

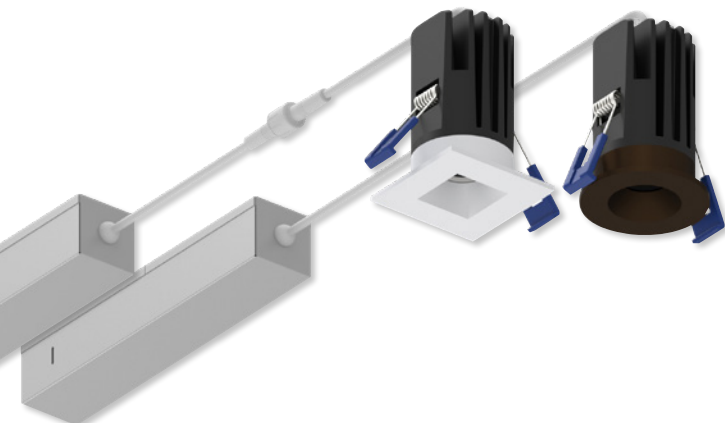
| DESCRIPTION | LM / W | CCT | FINISH |
|------------------------------------|----------------------|------------------------------------|--|
| NM1-PRDC 1" Round Downlight | L1 600lm / 9W | 27 2700K 30 3000K | BB Matte Black BZ Bronze MPW Matte Powder White |

Ex: **NM1-PRDC27BB** - 1" M1+ Round LED Downlight, 600lm / 9W, 2700K, Matte Black

M1+ TRIM ACCESSORY

| DESCRIPTION | FINISH |
|---------------------------------------|--|
| NM1-PSDT Square Trim Accessory | BB Matte Black BZ Bronze MPW Matte Powder White |

- NF-R2** New Construction Frame-In for NM1-PRDC
- NMA-EW-4** 4' Extension Cable for NM1-PRDC & NM2-2RTLDC
- NMA-EW-10** 10' Extension Cable for NM1-PRDC & NM2-2RTLDC



NM1-PSDT / NM1-PRDC
Square Trim & Luminaire

