

NHIOICD-28 / NHIOICDCP-28

2" Iolite IC Air-Tight New Construction Housing

Source: 12W or 13W LED

800lm or 1000lm

Type

Project

Catalog No.

Notes

PRODUCT DESCRIPTION

New construction housing for use in insulated ceilings can be in direct contact with insulation. Air-tight construction provides energy savings by reducing the flow of air through the ceiling. Patented design allows for easy, tool-less removal of the driver.

SPECIFICATION

Housing: 0.040" Aluminum shallow housing can be installed in 1/2" ceiling thickness, an extension collar ([NIO-2EXTC2](#)) is available for ceiling thickness up to 2".

Patented Driver Assembly: Allows driver to slide out of housing without tools from the room side.

Air Flow Restriction: Meets requirements of Air-Tight (AT) <2CFM (cubic feet per minute) in accordance with ASTM-283 Air-Tight requirements.

Clearance: "IC" Insulated ceiling housings are direct contact rated. Not to be used in direct contact with spray foam insulation.

Bar Hangers: Two 13-3/4" to 24-1/2" adjustable bar hangers with captive nails are included on housing. Bar hangers are parallel to junction box, but can be repositioned 90° perpendicular to junction box if desired. "L"-shaped bar hanger foot to align to bottom of construction joist. A T-bar notch allows for easy installation in a suspended ceiling.

Junction Box: Pre-wired 25 cubic inch 0.064" thick galvanized steel box with seven 1/2" knockouts and snap on covers. All leads are #18AWG wire, the ground wire is connected to the bottom, and quick connectors are supplied on all leads. Maximum of 8 no. 12 AWG through branch circuit conductors suitable for at least 90°C permitted in junction box. Junction box is accessible from the room side through housing opening.

Romex Strain Relief: Junction box includes two Romex tabs with two slots at each tab for NM-cables of 12/2 to 14/2. The strain relief allows for easy installation and less materials.

COMPATIBLE TRIMS & MONOPOINTS

CATALOG NO.	DESCRIPTION
NIOB-2RC	2" Round Adjustable Cone Reflector
NIOB-2SC	2" Square Adjustable Cone Reflector
NIOB-2RG	2" Round Adjustable Surface Gimbal
NIOB-2SG	2" Square Adjustable Surface Gimbal
NIOB-2RND	2" Round Downlight
NIOB-2SND	2" Square Downlight / Round Aperture
NIOB-2SNDsq	2" Square Downlight / Square Aperture
NIOB-2RPH	2" Round Pinhole
NIOB-2RPHA	2" Round Adjustable Pinhole
NIOB-2RSL	2" Round Adjustable Slot Aperture
NIOB-2RNB	2" Round Bullnose
NIOB-2SNB	2" Square Bullnose
NIO-2RTLA	2" Round Trimless Adjustable Reflector
NIO-2RTLND	2" Round Trimless Downlight
NIOB-2RCY	2" iPOINT Cylinder
NIOB-2RTC	2" iPOINT Cone

EMERGENCY

Pre-Wired: Housing can be specified with connections for emergency battery installation. Access above ceiling required. Must specify battery with remote test switch separately ([NEPK-07LEDUNV](#)).

Note: Pre-Wired is not compatible with Chicago Plenum housings

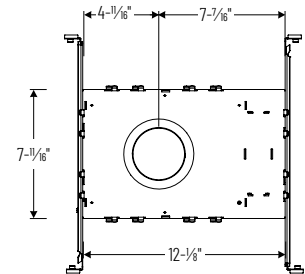
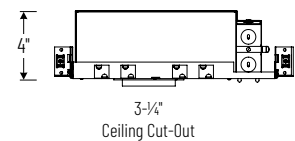
Integrated: Compact emergency driver is mounted directly to the junction box. Access above ceiling required. 90 minute illumination time with 6W output in emergency mode. Battery requires 24 hours to recharge and consumes 3W when charging. Remote test switch and 3' cable included.

LABELS AND LISTINGS

- cULus Listed for Damp Locations (Wet Locations when used with compatible trim)
- [5-Year Limited Warranty](#)
- RoHS compliant
- FCC compliant
- Patent #D824567S
- Meets or exceeds ASTM-283 Air-Tight requirements



PRODUCT IMAGES AND DIMENSIONS



ELECTRICAL	28LE3	28LE4	28LUPEQ	28DAL
Input Voltage	120V	120-277V	120/277V	120-277V
Input Power	13W	12W	13W	
Power Factor	≥0.90			
Dimming	Triac / ELV	Triac / ELV / 0-10V	Lutron EcoSystem	DALI 2
Operating Temperature	40°C max.			

2" Iolite IC Air-Tight New Construction Housing - Compatible with NIOB-2, NIO-2 & NIOB-2

Housing Type	Driver / Dimming	Optional Emergency
NHIOICD-28 = IC Air-Tight	LE3 = 120V input; Triac / ELV dimming	/EM2 = Integrated Emergency w/ Remote Test Switch
NHIOICDCP-28 = Chicago Plenum	LE4 = 120-277V input; Triac / ELV / 0-10V dimming	/PEM = Pre-Wired for Remote Emergency (not compatible with NHIOICDCP)
	LUPEQ = 120/277V input; Lutron Hi-lume Premier 0.1% EcoSystem with Soft-On, Fade-to-Black (Consult factory)	
	DAL = 120-277V input; DALI 1% dimming	

Optional Accessories

Description
NEPK-07LEDUNV = Remote Emergency Battery w/Test Switch
NIO-2EXTC2 = Ceiling Extension Collar up to 2"
NIO-2WCC2 = Wood Ceiling Collar up to 2"

Example: NHIOICD-28LE3 = 2" Iolite IC Air-Tight New Construction Housing, 120V input; Triac / ELV dimming