



LED OUTDOOR WALL SCONCE

OLWS-22 series

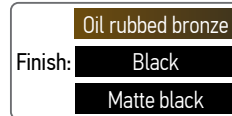
► **DESIGN** - LED OUTDOOR WALL SCONCES has a modern, multipurpose design and a stylish look with efficient lighting. The UV resistant PMMA lens with a 160° beam angle grants you even light distribution. It is designed to operate on 120-277V circuits and allows switching the color temperature.

► **VARIETY** - The fixture comes in 12-inch, 18 inch, 24-inch and 36-inch and available in Black or Bronze finishes.

► **COLOR SELECTABLE** - You can choose either a 3000K warm white, 4000K cool white or 5000K daylight color temperature.

► **APPLICATION** - The fixture is rated for Wet Locations, making it perfect for indoor and outdoor projects such as decks, front doors, porches, patios, corridors, walkways, or any other common areas.

► **ADVANTAGES** - With a lifespan of 50,000 hours, these fixtures are made to last decades under normal operation! ASD provides a 5-year limited warranty along with ETL certification to guarantee top quality products and safety!



Model	Size	Power	Voltage	Dimming	Lumens	CCT	Finish	Dimensions	Certification
ASD-OLWS-22-MV-12N15CC-BZ	12 inch	15 W	120-277 V	-	1,010 lm	3,000/4,000/5,000 K	Oil rubbed bronze	12" x 6-1/8" x 4"	ETL(4001256)
ASD-OLWS-22-MV-18N20CC-BZ	18 inch	20 W	120-277 V	-	1,515 lm	3,000/4,000/5,000 K	Oil rubbed bronze	17-15/16" x 6-1/8" x 4"	ETL(4001256)
ASD-OLWS-22-MV-18N20CC-BK	18 inch	20 W	120-277 V	-	1,515 lm	3,000/4,000/5,000 K	Black	17-15/16" x 6-1/8" x 4"	ETL(4001256)
ASD-OLWS-22-MV-24N23CC-BZ	24 inch	23 W	120-277 V	-	1,970 lm	3,000/4,000/5,000 K	Oil rubbed bronze	24-1/16" x 6-1/8" x 4"	ETL(4001256)
ASD-OLWS-22-MV-24N23CC-BK	24 inch	23 W	120-277 V	-	1,970 lm	3,000/4,000/5,000 K	Black	24-1/16" x 6-1/8" x 4"	ETL(4001256)
ASD-OLWS-22-MV-36N28CC-BK	36 inch	28 W	120-277 V	-	2,690 lm	3,000/4,000/5,000 K	Matte black	36-1/16" x 6-1/8" x 4"	ETL(4001256)

For detailed luminous flux information please refer to Annex1.

ORDERING INFORMATION

Model	UPC	Pcs. per carton	Carton size	Carton weight	GTIN 14
ASD-OLWS-22-MV-12N15CC-BZ	810050730679	4	14" x 15.8" x 11.6"	17.3 lbs	30810050730670
ASD-OLWS-22-MV-18N20CC-BZ	810050730686	4	19.9" x 15.8" x 11.6"	20.2 lbs	30810050730687
ASD-OLWS-22-MV-18N20CC-BK	810128116312	4	19.9" x 15.8" x 11.6"	20.2 lbs	20810128116316
ASD-OLWS-22-MV-24N23CC-BZ	810050730693	4	26" x 15.8" x 11.6"	26.5 lbs	30810050730694
ASD-OLWS-22-MV-24N23CC-BK	810128116329	4	26" x 15.8" x 11.6"	26.5 lbs	10810128116326
ASD-OLWS-22-MV-36N28CC-BK	810128116336	4	38" x 15.8" x 12.2"	37.6 lbs	10810128116333

ANNEX 1

Model	Watts	3,000 K	4,000 K	5,000 K
ASD-OLWS-22-MV-12N15CC-BZ	15W	790 lm	1,010 lm	928 lm
ASD-OLWS-22-MV-18N20CC-BZ ASD-OLWS-22-MV-18N20CC-BK	20W	1,335 lm	1,515 lm	1,403 lm
ASD-OLWS-22-MV-24N23CC-BZ ASD-OLWS-22-MV-24N23CC-BK	23W	1,600 lm	1,970 lm	1,775 lm
ASD-OLWS-22-MV-36N28CC-BK	28W	2,485 lm	2,690 lm	2,571 lm

For most up-to-date spec sheets please refer to asd-lighting.com

ASD LIGHTING CORP

E-mail: orders@asd-lighting.com | Web site: www.asd-lighting.com





LED OUTDOOR WALL SCONCE

OLWS-22 series

PRODUCT SPECIFICATIONS:

Construction & Materials			Regular and voluntary certifications	
Housing	Steel		5-year limited warranty	
Lens	PMMA		cETLus certified 4001256	
Finish	Oil rubbed bronze, Black, Matte black			
Weight	ASD-OLWS-22-MV-12N15CC-BZ	3.3 lbs (1.5 kg)		
	ASD-OLWS-22-MV-18N20CC-BZ	4.4 lbs (2 kg)		
	ASD-OLWS-22-MV-18N20CC-BK			
	ASD-OLWS-22-MV-24N23CC-BZ	5.6 lbs (2.5 kg)		
	ASD-OLWS-22-MV-24N23CC-BK			
	ASD-OLWS-22-MV-36N28CC-BK	7.7 lbs (3.5 kg)		
Environmental system				
Work environment	Suitable for Wet Locations			
Operating temperature	-40°F to 113°F (-40°C to 45°C)			
L-70 Life	> 50,000 hrs			
Optical system				
Color temperature	3CCT switch (3,000/4,000/5,000 K), 3,000 K by default			
CRI	> 80			
Electrical system				
Input voltage	120-277 V			
Max input current	0.35 A			
	for 12" model: 0.15 A			
	for 36" model: 0.26 A			
Inrush current (Action time)	0.16 A (0.2 S)			
	for 12" model: 0.11 A (0.2 S)			
	for 36" model: 0.23 A (0.1 S)			
Off state power	0W			
Power consumption	ASD-OLWS-22-MV-12N15CC-BZ	15W		
	ASD-OLWS-22-MV-18N20CC-BZ	20W		
	ASD-OLWS-22-MV-18N20CC-BK			
	ASD-OLWS-22-MV-24N23CC-BZ	23W		
	ASD-OLWS-22-MV-24N23CC-BK			
	ASD-OLWS-22-MV-36N28CC-BK	28W		
Power factor	> 0.9			
Output voltage	30-38 V			
	for 12" model: 18-36 V			
	for 36" model: 18-40 V			
Max output current	0.58 A			
	for 12" model: 0.35 A			
	for 36" model: 0.7 A			
Surge protection DM/CM	1.5 kV / 1.5 kV			

Regular and voluntary certifications	
5-year limited warranty	
cETLus certified 4001256	

PACKAGE CONTENTS FOR 12", 18" MODELS:

Description	Quantity
LED Outdoor Wall Sconce	1
Mounting plate (A)	1
Mounting screw (B)	2
Outlet box screw (C)	2
Wire nut (D)	3
Short screw (E)	2
Decorative cap nut (F)	2
Box	1

A

B

C

D

E

F

PACKAGE CONTENTS FOR 24", 36" MODELS:

Description	Quantity
LED Outdoor Wall Sconce	1
Mounting plate (A)	1
Mounting screw (B)	2
Outlet box screw (C)	2
Wire nut (D)	3
Short screw (E)	2
Decorative cap nut (F)	2
Anchor (G)	2
Self-tapping screw (H)	2
Box	1

A

B

C

D

E

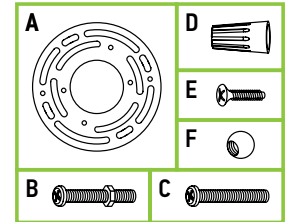
F

G

H

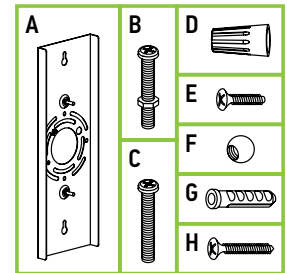
PACKAGE CONTENTS FOR 12", 18" MODELS:

Description	Quantity
LED Outdoor Wall Sconce	1
Mounting plate (A)	1
Mounting screw (B)	2
Outlet box screw (C)	2
Wire nut (D)	3
Short screw (E)	2
Decorative cap nut (F)	2
Box	1



PACKAGE CONTENTS FOR 24", 36" MODELS:

Description	Quantity
LED Outdoor Wall Sconce	1
Mounting plate (A)	1
Mounting screw (B)	2
Outlet box screw (C)	2
Wire nut (D)	3
Short screw (E)	2
Decorative cap nut (F)	2
Anchor (G)	2
Self-tapping screw (H)	2
Box	1



For most up-to-date spec sheets please refer to asd-lighting.com

ASD LIGHTING CORP

E-mail: orders@asd-lighting.com | Web site: www.asd-lighting.com





LED OUTDOOR WALL SCONCE

OLWS-22 series

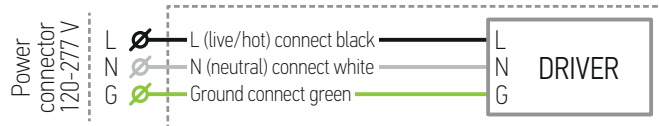
INSTALLATION GUIDE

IMPORTANT SAFETY INFORMATION:

Please read all the instructions below before installation!

- ▶ Make sure that the supply voltage corresponds to the rated product voltage.
- ▶ The product must be installed by a qualified electrician in accordance with the National Electrical Code and corresponding local codes.
- ▶ If the product is damaged, do not use it.

ELECTRICAL SCHEMATIC DIAGRAM:



⚠ WARNING

RISK OF PERSONAL INJURY – READ and follow all WARNINGS and installation instructions. Keep or give to the owner for future reference.

Risk of cuts: Wear gloves to prevent cuts or abrasions when removing from carton, handling, installing, and maintaining this product.

Risk of electric shock: This product must be installed in accordance with the applicable installation code by a person familiar with the construction and operation of the product and the hazards involved.

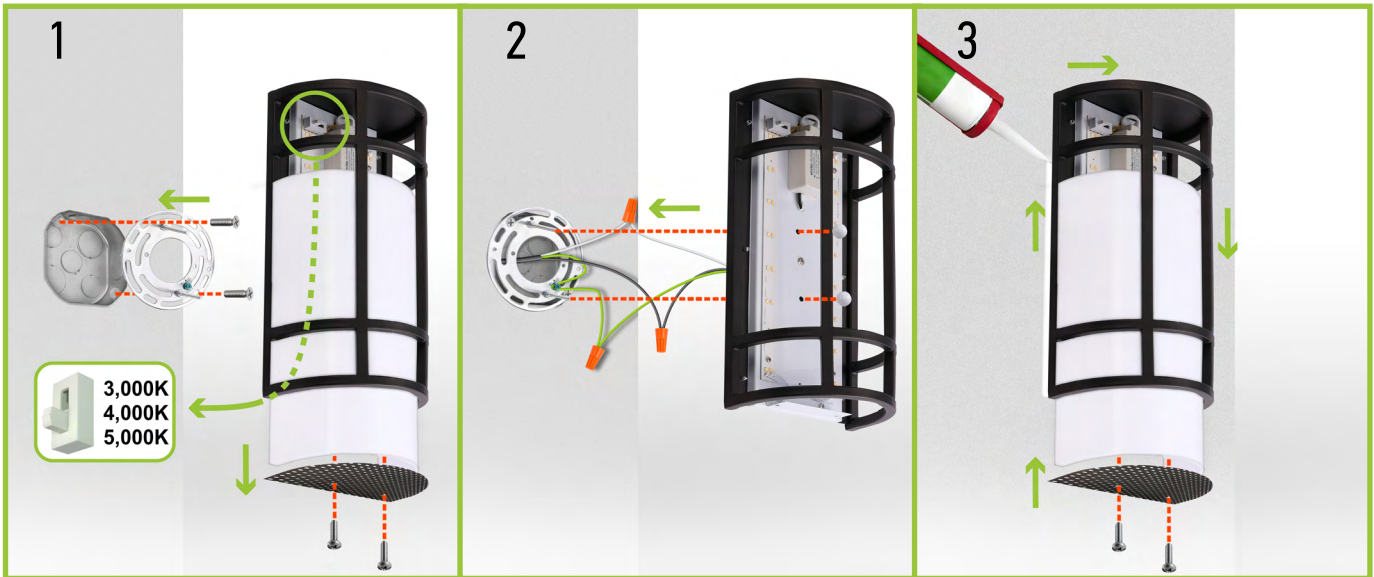
Risk of Fire: Minimum 194°F supply conductors. Consult a qualified electrician to ensure correct branch circuit conductor.

ASD® assumes no responsibility for claims arising out of improper or careless installation or handling of this product.

INSTALLATION STEPS 12", 18" MODELS:

1. Screw the two mounting screws onto the mounting plate. Attach the mounting plate to the outlet box using screws. Make sure the threads of the mounting screws are facing outside when the mounting plate is attached to the outlet box. Remove the bottom cover and pull out the lens. Choose preferred color temperature by adjusting the switch position.
2. Connect the wires: Black to Black, White to White, Ground to Ground. Secure the connection with wire nuts. Place the fixture on the wall by aligning the protruding mounting screws through the holes on the fixture. Tighten each mounting screw with a decorative cap nut.
3. Put the lens back and attach the bottom cover with two short screws.

For outdoor locations please use silicone (not included).



* This fixture is not rated for heavy salt water exposure or high salt content in the air. It may cause parts of the fixture to Rust. Will void the warranty of the fixture if installed in a coastal area.

For most up-to-date spec sheets please refer to asd-lighting.com

ASD LIGHTING CORP

E-mail: orders@asd-lighting.com | Web site: www.asd-lighting.com





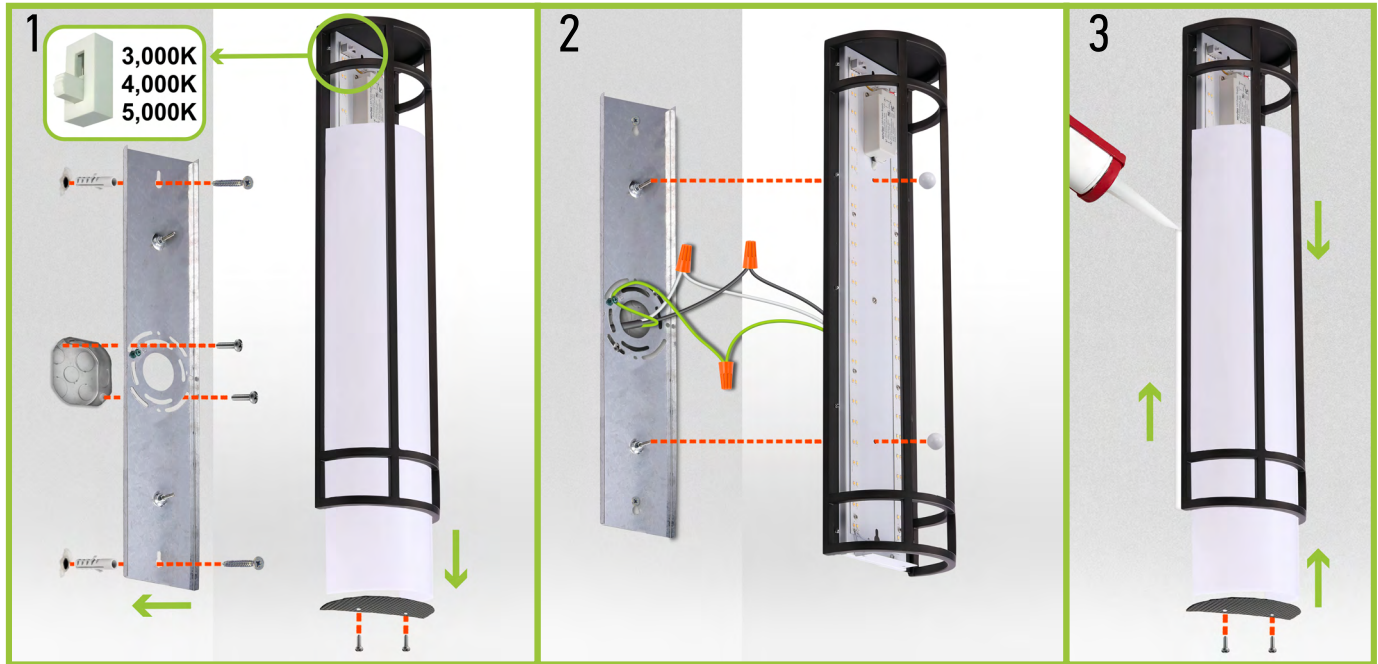
LED OUTDOOR WALL SCONCE

OLWS-22 series

INSTALLATION STEPS 24", 36" MODELS:

1. Remove the bottom cover and pull out the lens. Choose preferred color temperature by adjusting the switch position. Attach the mounting plate to the outlet box and mark the location of the holes for the wall anchors in the narrow ends of the keyholes. Remove the mounting plate and drill two appropriate sized holes for anchors, insert anchors into the holes, twist the two self-tapping screws into the anchors. Attach the mounting plate to the outlet box using two screws and tighten self-tapping screws.
2. Connect the wires: Black to Black, White to White, Ground to Ground. Secure the connection with wire nuts. Place the fixture on the wall by aligning the protruding mounting screws through the holes on the fixture. Tighten each mounting screw with a decorative cap nut.
3. Put the lens back and attach the bottom cover with two short screws.

For outdoor locations please use silicone (not included).



For most up-to-date spec sheets please refer to asd-lighting.com

ASD LIGHTING CORP

E-mail: orders@asd-lighting.com | Web site: www.asd-lighting.com

