



WWW.ASD-LIGHTING.COM

WAREHOUSE LIGHTING



2025

PRODUCT
PRESENTATION

WAREHOUSE LIGHTING






WWW.ASD-LIGHTING.COM



LED UFO HIGH BAY

03	LED UFO HIGH BAY slim series UHS	
04	LED UFO HIGH BAY standard series UHB2A ST	
09	LED UFO HIGH BAY neox series UHB2A NEOX	
13	BATTERY BACK-UP KITS	
14	LENSES FOR UHB2A	
15	MOUNTING BRACKETS	

LED LINEAR HIGH BAY

16	LED LINEAR HIGH BAY standard series WHB5B ST	
23	LED LINEAR HIGH BAY neox series WHB5B NEOX	
27	LED LINEAR HIGH BAY RGBW WHB7	
28	BATTERY BACK-UP KITS	
29	MOUNTING BRACKETS	

MOTION SENSORS

31	MOTION SENSORS	
----	----------------	---



LED UFO HIGH BAY

SLIM SERIES

5-FT CORD WITH
A NEMA 5-15
PLUG

UHS

WITH 5FT CORD AND PLUG

120-277V


The LED UFO HIGH BAY SLIM WITH 5FT CORD AND NEMA 5-15 PLUG features a durable die-cast aluminum housing that ensures excellent heat dissipation, paired with an anti-glare PC lens for long-lasting performance. An ideal solution for temporary lighting, it combines mobility with durability to meet demanding job site or event needs. With an IP65 rating, it is built for reliable operation in various environments, while the 4kV surge protection safeguards against voltage spikes and power surges.

W POWER
AVAILABLE
100, 150, 200W


3CCT COLOR
TEMPERATURE
5000K

 IP65 RATED



 5-FT CORD WITH A NEMA
5-15 PLUG



 -4°F TO 104°F FOR A WIDE
VARIETY OF APPLICATIONS



 SURGE PROTECTION
4KV





120-277V
voltage



4kV
Surge
protection



Wet
locations



ETL
Intertek

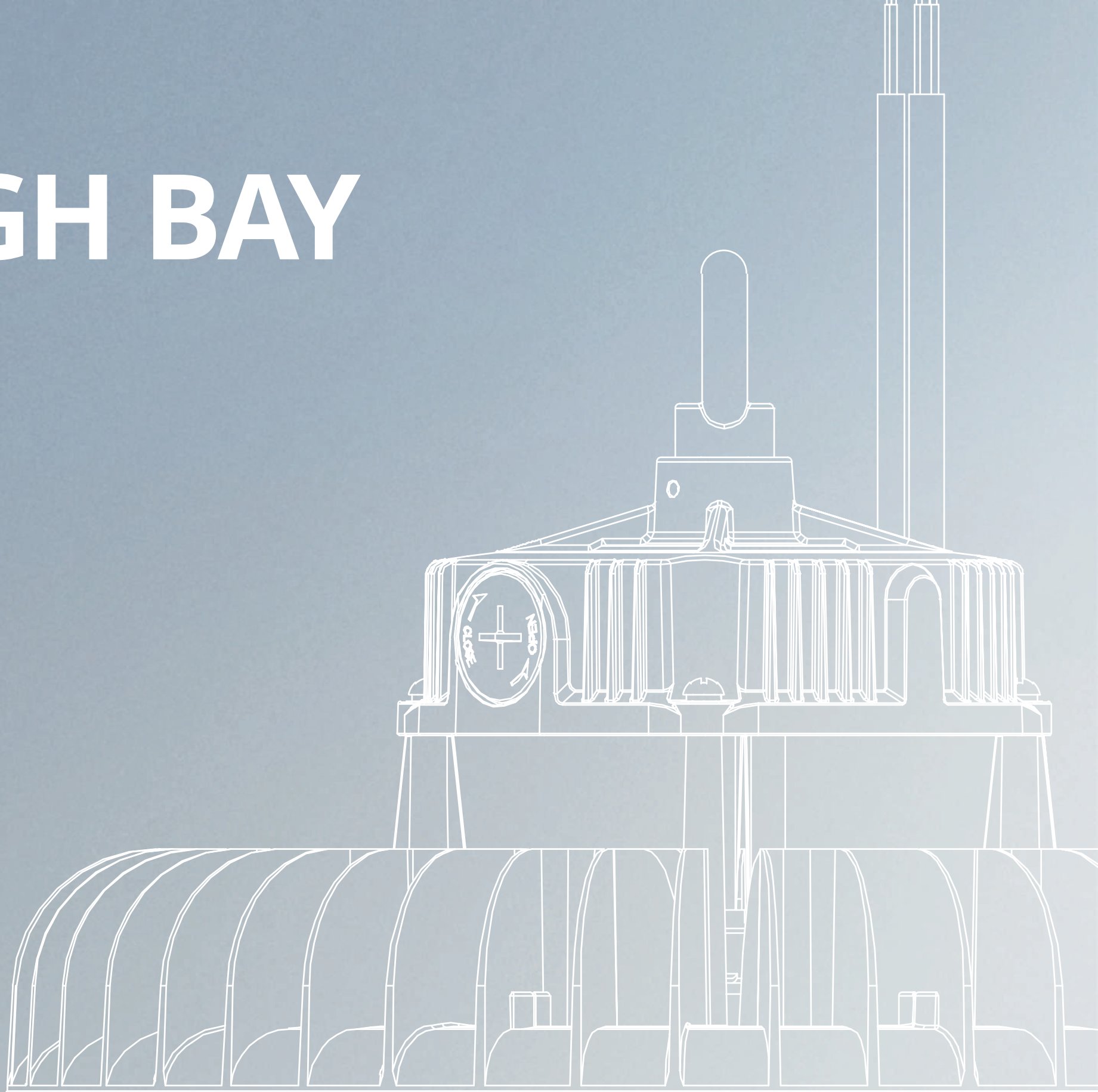


3
YEAR
WARRANTY

LED UFO HIGH BAY

WITH Q-BASE

STANDARD SERIES



LED UFO HIGH BAY

STANDARD SERIES



INFRARED
MOTION
SENSOR

OR



MICROWAVE
MOTION
SENSOR

Q-BASE



UHB2A

WITH Q-BASE

120-277V

LED UFO HIGH BAY ST SERIES features a die-cast aluminum housing that ensures superior heat dissipation, paired with an anti-glare polycarbonate (PC) lens, guaranteeing durability and long-lasting performance. It includes a 0-10V dimmable driver for adjustable lighting control.



**POWER
ADJUSTABLE**
100-500W



**COLOR
SELECTABLE**
3000K, 4000K, 5000K



IP69K RATED, ALLOWS HIGH
PRESSURE WITH HIGH
TEMPERATURE WASHING



BUILT-IN Q-BASE



-40°F TO 131°F FOR A WIDE
VARIETY OF APPLICATIONS



SURGE PROTECTION
6KV



LED UFO HIGH BAY

STANDARD SERIES

170
lm/W
SERIES
STANDARD

4FT CORD

COLOR
AND POWER
ADJUSTABLE
SWITCH



UP TO 1000
WATTS



INFRARED
MOTION
SENSOR

OR



MICROWAVE
MOTION
SENSOR

Q-BASE



UHB2A-HV

WITH Q-BASE

200-480V HIGH VOLTAGE

LED UFO HIGH BAY ST SERIES is designed with a robust die-cast aluminum housing that provides excellent heat dissipation, combined with an anti-glare polycarbonate (PC) lens for enhanced durability and long service life. The fixture operates within a 200-480V range and comes equipped with a 0-10V dimmable driver, offering flexible lighting control.

W POWER
ADJUSTABLE
100-500W

3CCT COLOR
SELECTABLE
3000K, 4000K, 5000K

IP69K RATED, ALLOWS HIGH
PRESSURE WITH HIGH
TEMPERATURE WASHING



BUILT-IN Q-BASE



-40°F TO 131°F FOR A WIDE
VARIETY OF APPLICATIONS

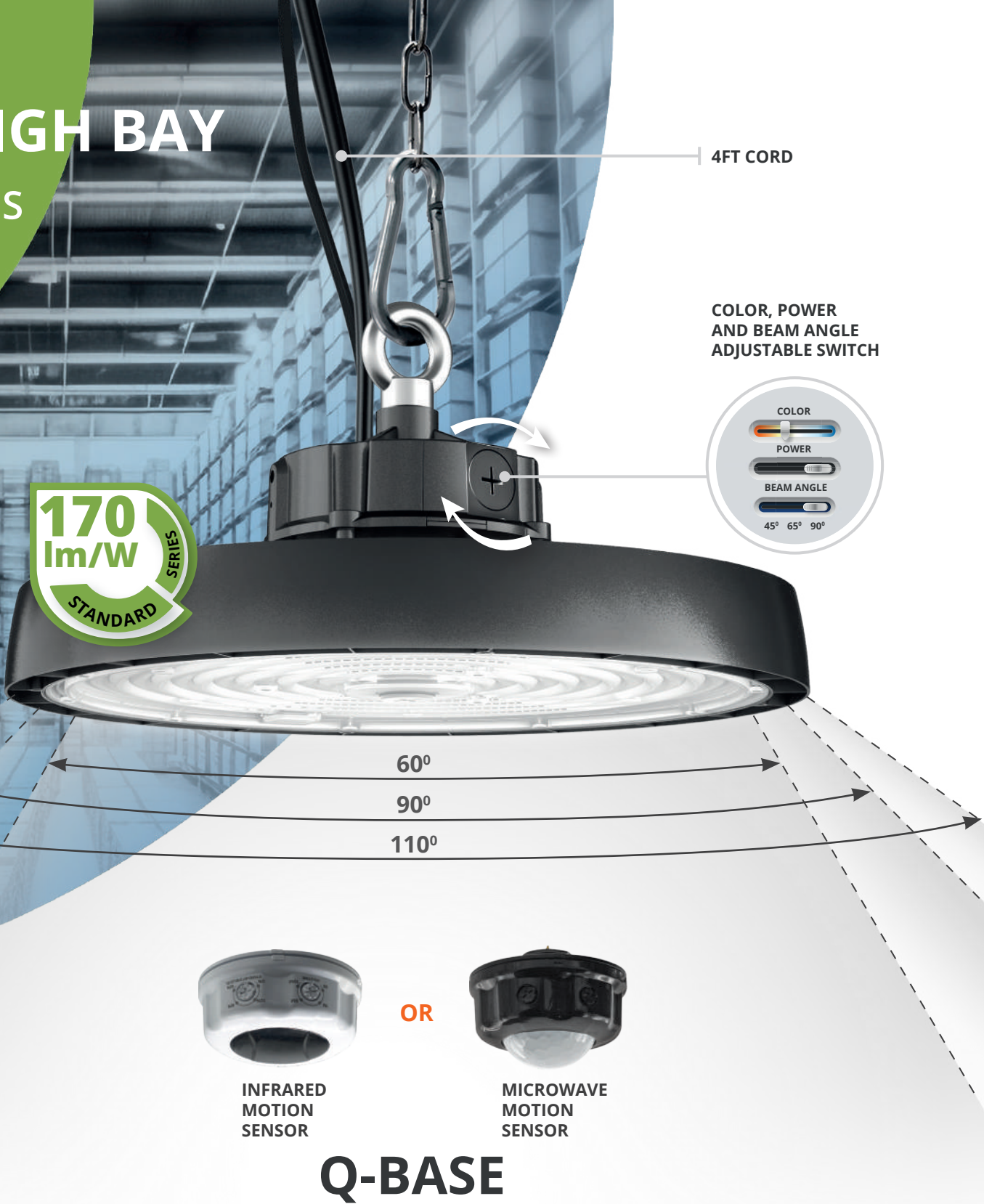


SURGE PROTECTION
6KV



LED UFO HIGH BAY

STANDARD SERIES



UHB2A-BA BEAM ANGLE ADJUSTABLE

WITH Q-BASE

120-277V

LED UFO BEAM ANGLE ADJUSTABLE HIGH BAY delivers standard efficiency at 170 lm/W, ideal for commercial and industrial use. Its adjustable beam angle of 60° / 90° / 110° allows flexible light distribution for various spaces and tasks. The die-cast aluminum housing and anti-glare PC lens ensure durability and efficient heat dissipation. An IK08 impact rating provides resistance to moderate mechanical impact, adding durability in demanding environments.

W **POWER ADJUSTABLE**
100-240W

3CCT **COLOR SELECTABLE**
3000K, 4000K, 5000K

A **BEAM ANGLE**
60°/90°/110°

IP69K RATED, ALLOWS HIGH PRESSURE WITH HIGH TEMPERATURE WASHING



BUILT-IN Q-BASE



-40°F TO 131°F FOR A WIDE VARIETY OF APPLICATIONS



6kV SURGE PROTECTION



120-277V voltage

Surge protection

0-10V dimming

Wet locations

DLC LISTED PREMIUM

UL CERTIFIED

5 YEAR WARRANTY

LED UFO HIGH BAY

STANDARD SERIES

120-277V



100/120/150W



100/150/200W



150/200/240W



200/240/300W



300/400/500W

BEAM ANGLE ADJUSTABLE



100/150/200W



150/200/240W

200-480V

HIGH VOLTAGE



100/120/150W



100/150/200W



150/200/240W



200/240/300W



300/400/500W



500/600/750W

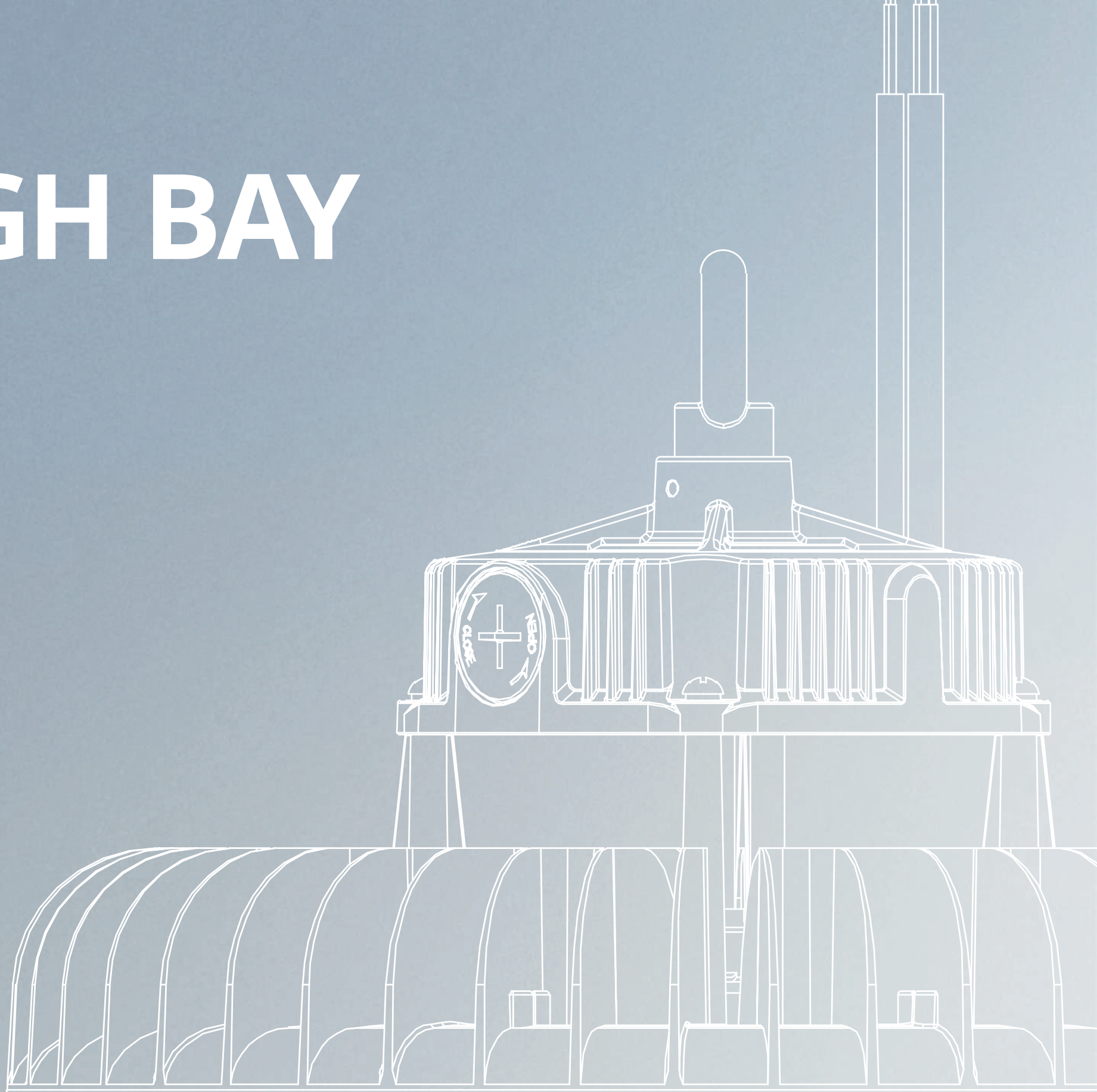


500/750/1000W

LED UFO HIGH BAY

WITH Q-BASE

NeoX SERIES



LED UFO HIGH BAY

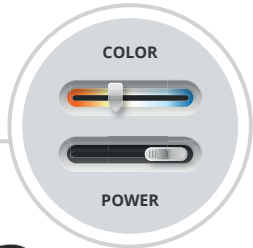
NEOX SERIES
TOP TIER EFFICIENCY!



**200
lm/W**
NEOX
SERIES

4FT CORD

COLOR
AND POWER
ADJUSTABLE
SWITCH



INFRARED
MOTION
SENSOR

OR



MICROWAVE
MOTION
SENSOR

Q-BASE



120-277V
voltage



6kV
Surge
protection



0-10V
dimming



Wet
locations

UHB2A

WITH Q-BASE

120-277V

LED UFO HIGH BAY NEOX SERIES engineered for high-performance industrial and commercial applications, the NEOX Series delivers top tier efficacy at 200 lumens per watt. Constructed with a precision die-cast aluminum housing, it ensures superior thermal management for long-lasting reliability. Designed for versatility, the NEOX Series integrates a 0-10V dimmable driver, enabling seamless integration with lighting control systems for improved energy management. Ideal for warehouses, manufacturing facilities, and large indoor environments requiring high-output, energy-efficient illumination.



**POWER
ADJUSTABLE**
100-500W



IP69K RATED, ALLOWS HIGH
PRESSURE WITH HIGH
TEMPERATURE WASHING



-40°F TO 131°F FOR A WIDE
VARIETY OF APPLICATIONS



**COLOR
SELECTABLE**
3000K, 4000K, 5000K



BUILT-IN Q-BASE



SURGE PROTECTION
6KV



LED UFO HIGH BAY

NEOX SERIES
TOP TIER EFFICIENCY!



INFRARED
MOTION
SENSOR

OR



MICROWAVE
MOTION
SENSOR

Q-BASE



UHB2A-HV

WITH Q-BASE

200-480V HIGH VOLTAGE

LED UFO HIGH BAY NEOX SERIES is built for demanding industrial and commercial environments, delivering top tier performance with an efficacy of 200 lumens per watt. Its precision die-cast aluminum housing provides excellent thermal management, ensuring durability and long service life. For added flexibility, the NEOX Series operates on a wide 200-480V input range and features a 0-10V dimmable driver, allowing smooth integration with advanced lighting control systems for optimized energy efficiency. It is an ideal solution for warehouses, manufacturing plants, and large indoor spaces requiring powerful and energy-saving illumination.



**POWER
ADJUSTABLE**
100-500W



**COLOR
SELECTABLE**
3000K, 4000K, 5000K



IP69K RATED, ALLOWS HIGH
PRESSURE WITH HIGH
TEMPERATURE WASHING



BUILT-IN Q-BASE



-40°F TO 131°F FOR A WIDE
VARIETY OF APPLICATIONS



SURGE PROTECTION
6KV



LED UFO HIGH BAY

NEOX SERIES

120-277V



100/120/150W



100/150/200W



150/200/240W



200/240/300W



300/400/500W

200-480V

HIGH VOLTAGE



100/120/150W



100/150/200W



150/200/240W



200/240/300W



300/400/500W

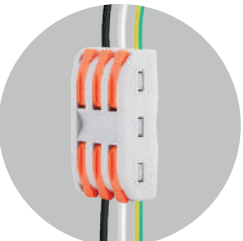
BATTERY BACK-UP

FOR UFO HIGH BAY

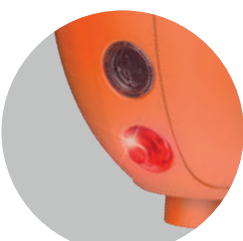
90
MINUTES
OF WORKING IN
EMERGENCY MODE



DURABLE
SPRING
HOOK



CONVENIENT
INTERNAL
WIRING



TEST
BUTTON
with LED
status indicator

BATTERY BACK-UP KITS

BATTERY BACK-UP with its durable lithium-ion battery provides constant output power to allow lighting fixture to operate 90 minutes in emergency battery mode during a power outage. It also has mode indicator that allows to see the back-up mode or AC mode is on at the moment.



MORE THAN 90 MINUTES
OF WORKING IN EMERGENCY MODE



REGULAR
SELF TESTING



OVERCHARGE AND
OVER-DISCHARGE PROTECTION



WET LOCATIONS
RATED

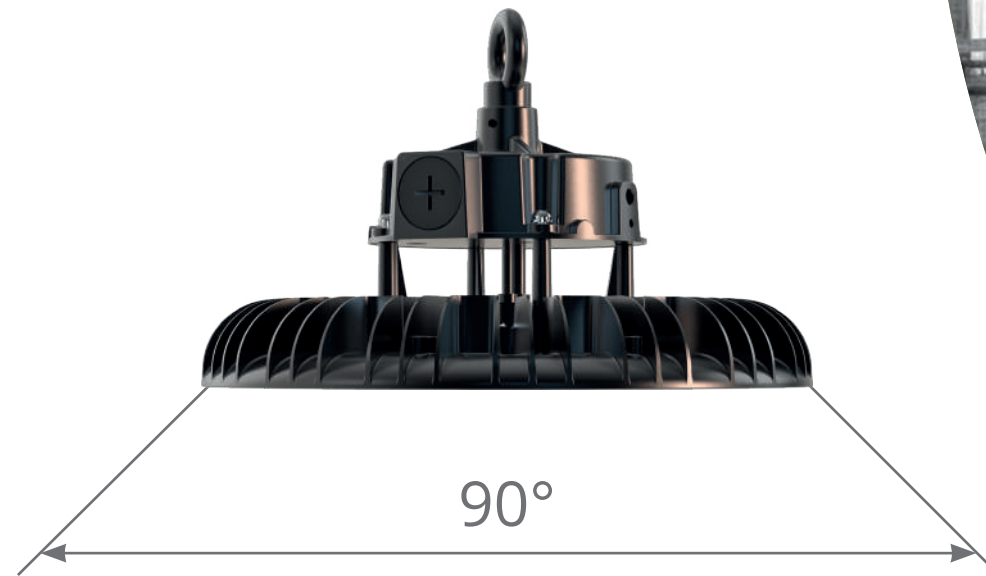
BATTERY BACK-UP KIT 120-277V



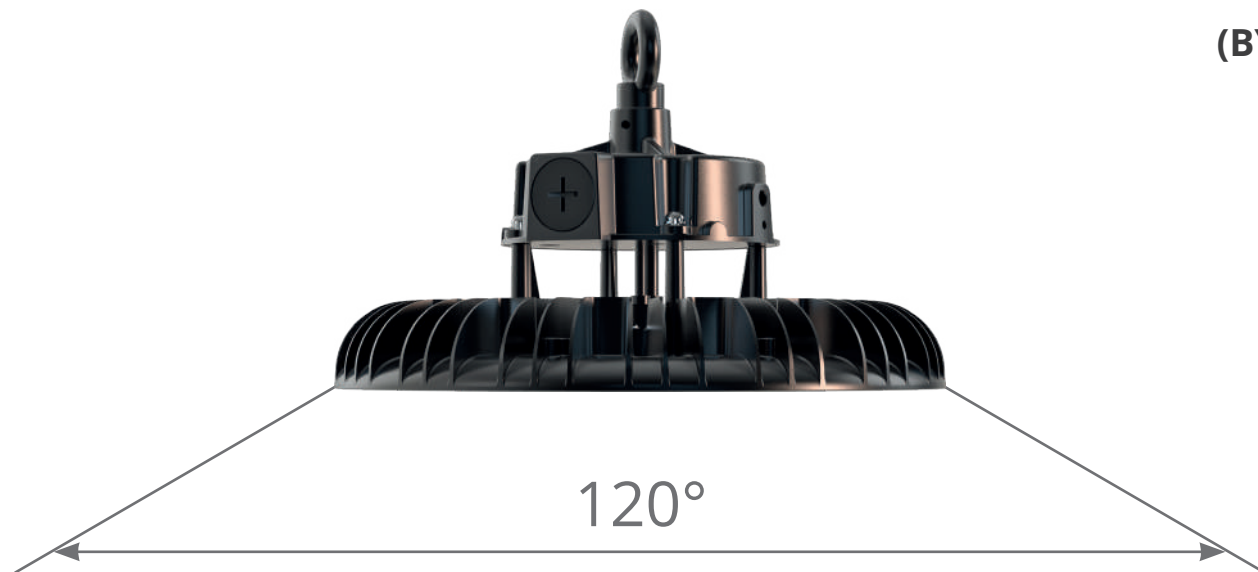
BATTERY BACK-UP KIT 200-480V



LENSES FOR UHB2A



LENS 90°
(BY DEFAULT)



LENS 120°
(SOLD SEPARATELY)
L120A-UHB2A (150-240W)



LENS 60°
(SOLD SEPARATELY)
L60C-UHB2A (150-240W ST and NEOX)
L60D-UHB2A (300W ST)
L60B-UHB2A (300W NEOX)
L60E-UHB2A (500W ST and NEOX)



ACCESSORIES

MOUNTING BRACKETS for LED UFO HIGH BAY

SCREW-BOLT HOOK



HS-M10

SPRING HOOK



H-M10/M12

SURFACE MOUNT BRACKET



SMB-UHB2A-BK/WH

PENDANT MOUNT BRACKET



PMB-UHB

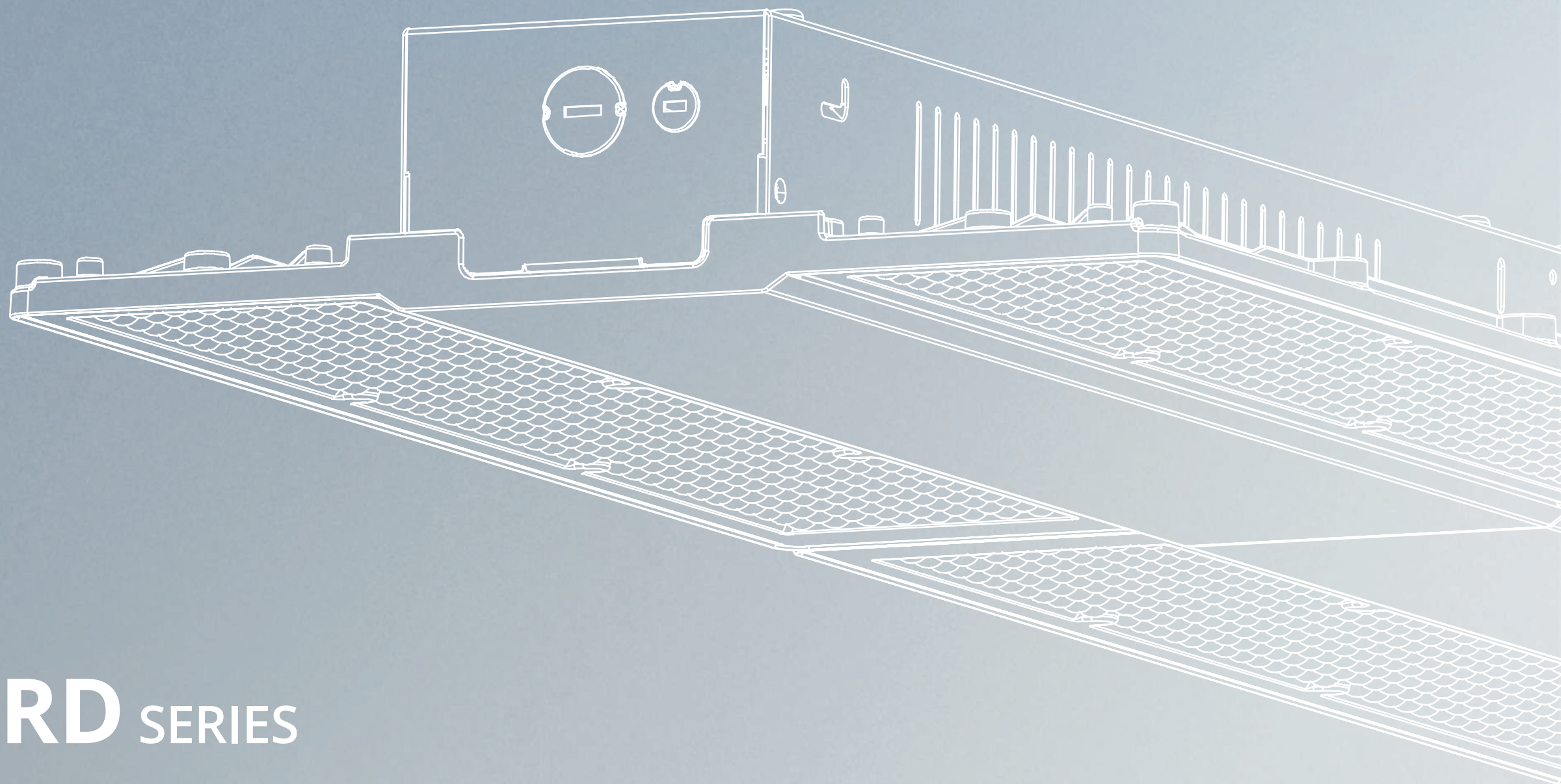
PENDANT MOUNT BRACKET WITH JUNCTION BOX



PMBJB-UHB

LED LINEAR HIGH BAY

WITH Q-BASE



STANDARD SERIES

LED LINEAR HIGH BAY

STANDARD SERIES

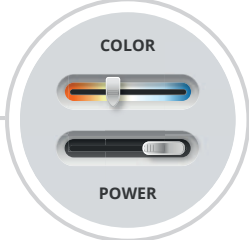
170
lm/W
SERIES
STANDARD

HOOKS
& 3,2FT CHAIN
(INCLUDED)

MICROWAVE
MOTION
SENSOR

OR

INFRARED
MOTION
SENSOR



COLOR
AND POWER
ADJUSTABLE
SWITCH

Q-BASE

WHB5B

WITH Q-BASE

120-277V

LED LINEAR HIGH BAY WITH Q-BASE ST SERIES is standard efficient – 170 Lm/W. Die-cast aluminum housing with excellent heat dissipation along with an anti-glare PC lens provide many years of use. The fixture can be adjusted to a temperature color of your choice, making it more comfortable for your eyes.

W POWER
ADJUSTABLE
100-750W

K COLOR
SELECTABLE
3500K, 4000K, 5000K

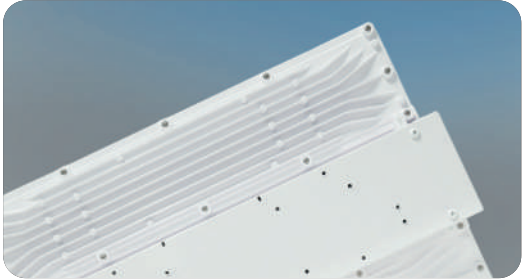
NEW STANDARD EFFICIENCY
170LM/W



COLOR AND POWER
SELECTABLE



DIE-CAST ALUMINIUM
HOUSING



IK10 IMPACT
PROTECTION



LED LINEAR HIGH BAY

STANDARD SERIES



WHB5B-HV


WITH Q-BASE


200-480V HIGH VOLTAGE

LED LINEAR HIGH BAY Q-BASE ST SERIES – a standard efficient fixture delivering 170 lm/W. The die-cast aluminum housing ensures excellent heat dissipation, while the anti-glare PC lens provides comfortable illumination and longlasting performance. The fixture allows adjustment of the color temperature for optimal visual comfort. Operates on a wide voltage range of 200-480V.

W POWER ADJUSTABLE
130-500W

K COLOR SELECTABLE
3500K, 4000K, 5000K

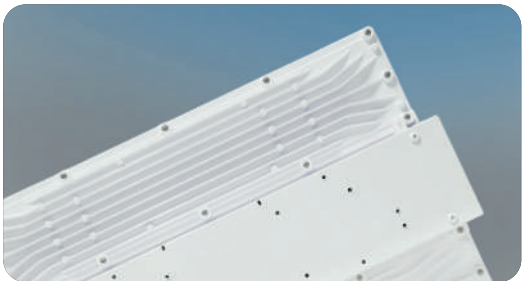
 NEW STANDARD EFFICIENCY
170LM/W

 COLOR AND POWER SELECTABLE



 DIE-CAST ALUMINIUM HOUSING

 IK10 IMPACT PROTECTION



LED LINEAR HIGH BAY

STANDARD SERIES



HOOKS
& 3,2FT CHAIN
(INCLUDED)

10FT CORD
AND L7-15P PLUG

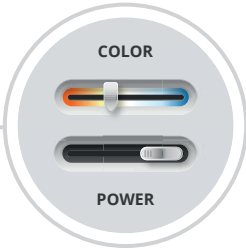


MICROWAVE
MOTION
SENSOR

OR



INFRARED
MOTION
SENSOR



COLOR
AND POWER
ADJUSTABLE
SWITCH

Q-BASE



120-277V
voltage



Surge
protection



0-10V
dimming



Wet
locations

WHB5B WITH CORD AND PLUG

WITH Q-BASE

120-277V

LED LINEAR HIGH BAY WITH Q-BASE with 10 feet cord with L7-15P plug is equipped with 6 kV surge protection, which makes it safe to use and protects it from power surges. With a cord and plug pre-installed, this fixture provides a quick and efficient solution for rapid installation



POWER
ADJUSTABLE
160, 220W



COLOR
SELECTABLE
3500K, 4000K, 5000K



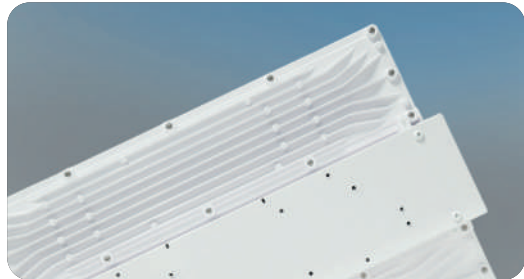
NEW STANDARD EFFICIENCY
170LM/W



COLOR AND POWER
SELECTABLE



DIE-CAST ALUMINIUM
HOUSING



IK10 IMPACT
PROTECTION



LED LINEAR HIGH BAY

STANDARD SERIES

170
lm/W
SERIES
STANDARD

45°
65°
90°

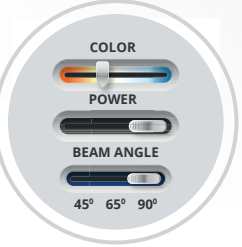


MICROWAVE
MOTION
SENSOR

OR



INFRARED
MOTION
SENSOR



COLOR, POWER
AND BEAM ANGLE
ADJUSTABLE SWITCH

Q-BASE

WHB5B BEAM ANGLE ADJUSTABLE

WITH Q-BASE

120-277V

LED LINEAR HIGH BAY WITH Q-BASE ST BA SERIES is standard efficient with a 170 lm/W output. It has a built-in Q-base, allowing you to install the micro-wave motion or PIR sensor. Its adjustable beam angle of 45° / 65° / 90° allows flexible light distribution for various spaces and tasks. Durable die-cast aluminum housing with excellent heat dissipation and an anti-glare PC lens ensures long-lasting performance and is rated IK08 for impact resistance.



POWER
ADJUSTABLE
130-320W



COLOR
SELECTABLE
3500K, 4000K, 5000K



BEAM
ANGLE
45°/65°/90°



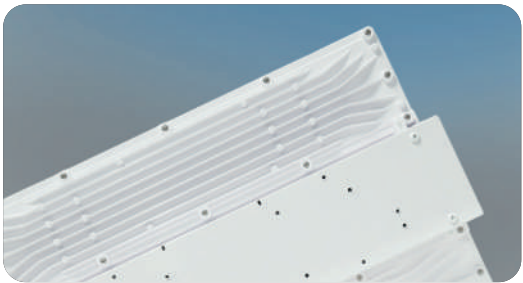
NEW STANDARD EFFICIENCY
170LM/W



COLOR AND POWER
SELECTABLE



DIE-CAST ALUMINIUM
HOUSING



IK10 IMPACT
PROTECTION



LED LINEAR HIGH BAY

STANDARD SERIES



Q-BASE



WHB5B WITH BATTERY BACK-UP

WITH Q-BASE

120-277V

LED LINEAR HIGH BAY WITH Q-BASE WITH 40W BATTERY BACK-UP provides up to 90 minutes of continuous operation, ensuring reliable lighting during power outages. It also includes adjustable power settings for enhanced energy efficiency and supports 0-10V dimming control.

W POWER ADJUSTABLE
100-320W

K COLOR SELECTABLE
3500K, 4000K, 5000K

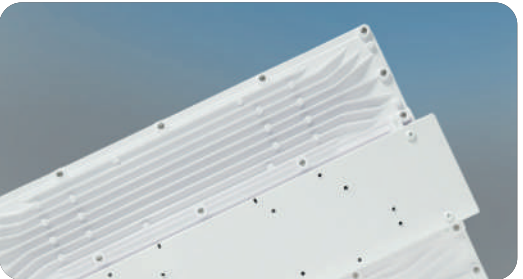
NEW STANDARD EFFICIENCY
170LM/W

COLOR AND POWER SELECTABLE



DIE-CAST ALUMINIUM HOUSING

IK10 IMPACT PROTECTION



LED LINEAR HIGH BAY

STANDARD SERIES

120-277V



60/80/100W



100/130/160W



130/160/220W



160/220/320W



320/400/500W



500/650/750W

WITH CORD AND L7-15P PLUG



100/130/160W



130/160/220W



130/160/220W

BEAM ANGLE ADJUSTABLE

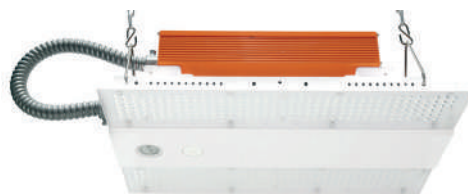


160/220/320W

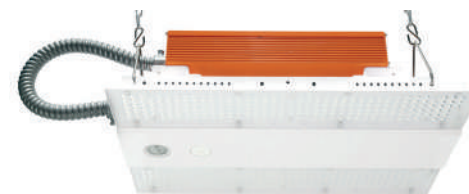
BUILT-IN BATTERY BACK-UP



100/130/160W



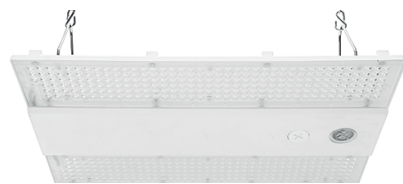
130/160/220W



160/220/320W

200-480V

HIGH VOLTAGE



130/160/220W



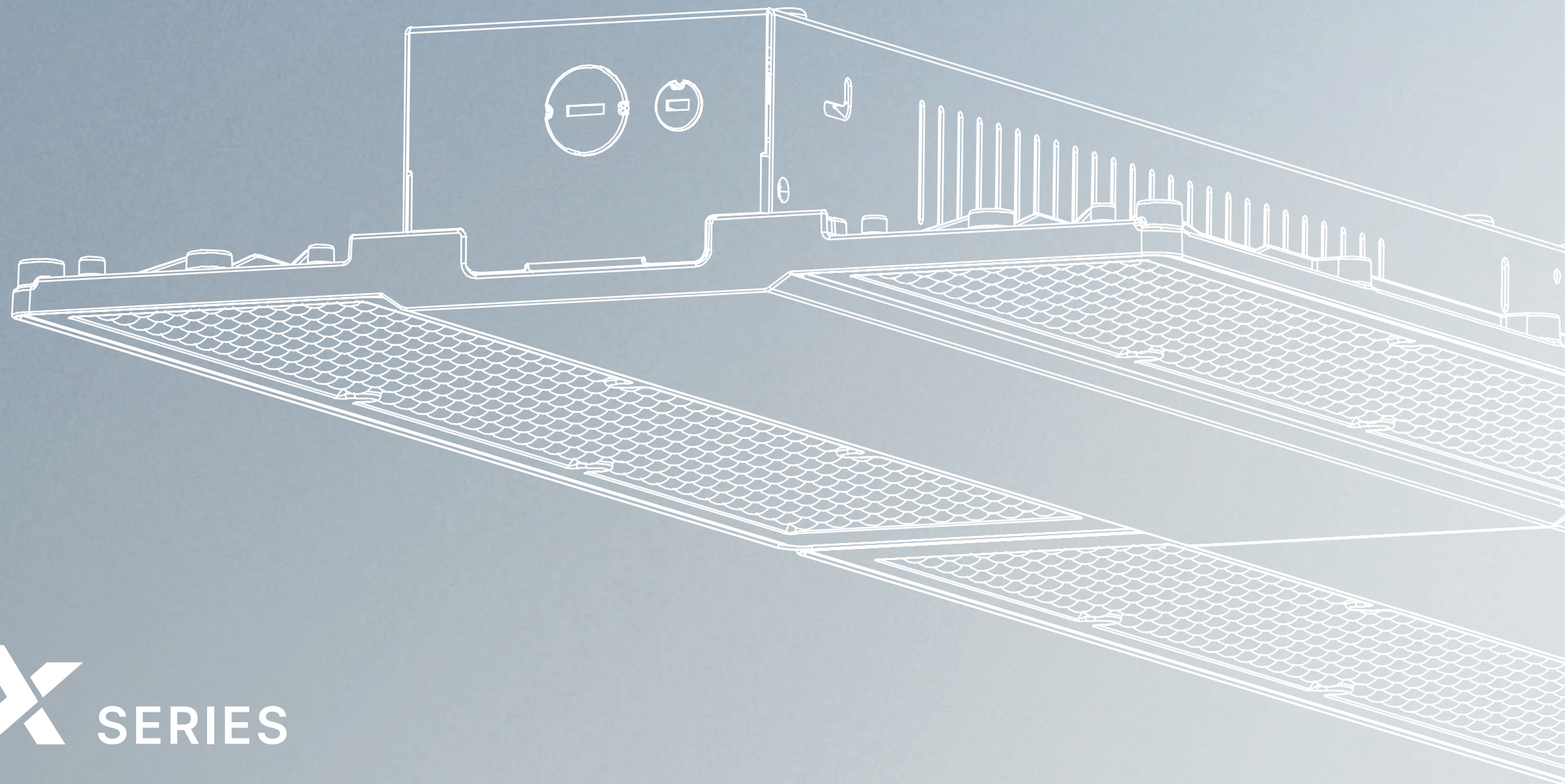
160/220/320W



320/400/500W

LED LINEAR HIGH BAY

WITH Q-BASE



NeoX SERIES

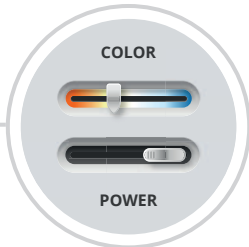
LED LINEAR HIGH BAY

NEOX SERIES
TOP TIER EFFICIENCY!



HOOKS
& 3,2FT
CHAIN ARE
(INCLUDED)

200
lm/W
SERIES
NEOX



COLOR
AND POWER
ADJUSTABLE
SWITCH



MICROWAVE
MOTION
SENSOR

OR



INFRARED
MOTION
SENSOR

Q-BASE

WHB5B

WITH Q-BASE

120-277V

LED LINEAR HIGH BAY NEOX SERIES designed for high-ceiling environments (12 ft and above), the LED Linear High Bay with Q-Base delivers top tier 200 lumens per watt efficiency, providing bright, even illumination across large areas. Adjustable power settings offer versatility for a variety of applications, while the rugged construction and quality materials ensure long-lasting, reliable performance.



**POWER
ADJUSTABLE**
100-500W



**COLOR
SELECTABLE**
3500K, 4000K, 5000K



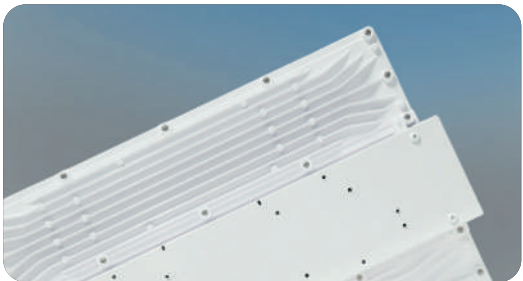
TOP TIER EFFICIENCY
200LM/W



COLOR AND POWER
SELECTABLE



DIE-CAST ALUMINIUM
HOUSING



IK10 IMPACT
PROTECTION



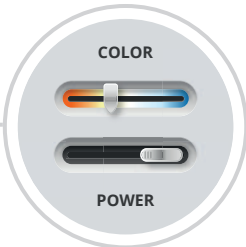
LED LINEAR HIGH-BAY

NEOX SERIES
TOP TIER EFFICIENCY!



HOOKS
& 3,2FT
CHAIN ARE
(INCLUDED)

200
lm/W
NEOX
SERIES



COLOR
AND POWER
ADJUSTABLE
SWITCH



MICROWAVE
MOTION
SENSOR

OR



INFRARED
MOTION
SENSOR

Q-BASE

WHB5B-HV

WITH Q-BASE

200-480V HIGH VOLTAGE

The NEOX Series combines top tier efficiency of 200 lm/W with advanced design to deliver bright, uniform illumination across expansive areas. Its selectable wattage settings provide flexibility for diverse applications, while the durable housing and premium materials ensure long service life and consistent performance. Built to operate reliably on a wide voltage range of 200-480V.



**POWER
ADJUSTABLE**
220-500W



**COLOR
SELECTABLE**
3500K, 4000K, 5000K



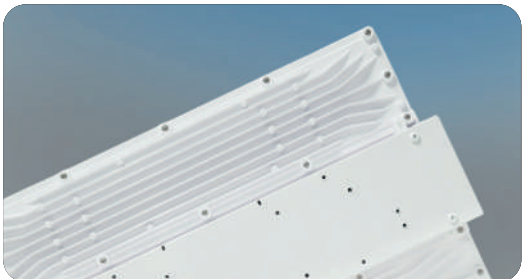
TOP TIER EFFICIENCY
220LM/W



COLOR AND POWER
SELECTABLE



DIE-CAST ALUMINIUM
HOUSING



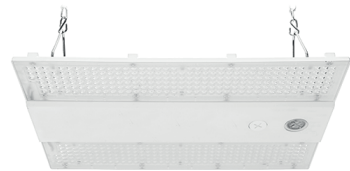
IK10 IMPACT
PROTECTION



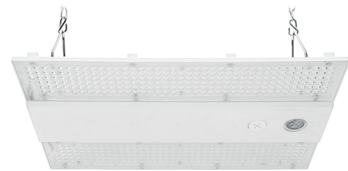
LED LINEAR HIGH BAY

NEOX SERIES

120-277V



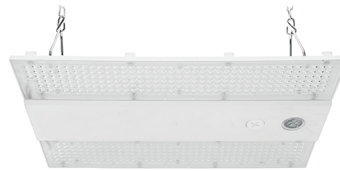
60/80/100W



100/130/160W



130/160/220W



160/220/320W



320/400/500W

200-480V

HIGH VOLTAGE



130/160/220W



160/220/320W



320/400/500W

LED LINEAR HIGH BAY

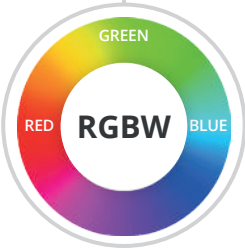
SMART RGBW



HOOKS
& 3,2FT
CHAIN ARE
(INCLUDED)



CONTROLLED
BY APP
ON YOUR
SMARTPHONE



RGBW DESIGN
WITH 16.7
MILLION
COLORS




WHB7 SMART RGBW

120-277V

SMART RGBW FULL SURFACE LINEAR HIGH BAY a blend of intelligent control and modern aesthetics, this fixture is crafted for both performance and durability. Its robust die-cast aluminum housing offers superior heat dissipation, while the anti-glare polycarbonate lens delivers comfortable and consistent lighting. The full-surface LED layout ensures broad, even illumination—ideal for commercial and industrial applications where reliability and style matter.

W POWER
AVAILABLE
160, 220W


RGBW RGBW
16.7 million
colors

 GROUP CONTROL




RGBW RGBW DESIGN WITH 16.7
MILLION COLORS



 SCHEDULING



 CONTROLLED BY SMART APP ON
YOUR SMARTPHONE



BATTERY BACK-UP KITS

FOR LED LINEAR HIGH BAY



90
MINUTES
OF WORKING IN
EMERGENCY MODE



STATUS
INDICATOR
/TEST
BUTTON

BATTERY BACK-UP KITS

BACK-UP BATTERY KIT ensures 90 minutes of power in case of emergency. The emergency kit has an automatic self-checking option. Installation is quick and easy, the battery is secured to the top of the device and connected using pre-installed connectors.



MORE THAN 6000LM
IN EMERGENCY MODE FOR 90MIN



REGULAR
SELF TESTING



OVERCHARGE AND
OVER-DISCHARGE PROTECTION



FAST AND SIMPLE
INSTALLATION

EMERGENCY LUMINOUS FLUX

MODEL	EMERGENCY MODE	lm
ASD-EMK20W-WHB5B	20W	more than 4000
ASD-EMK30W-WHB5A	30W	more than 6000



ASD-EMK20W-WHB5B 20W



ASD-EMK30W-WHB5A 30W

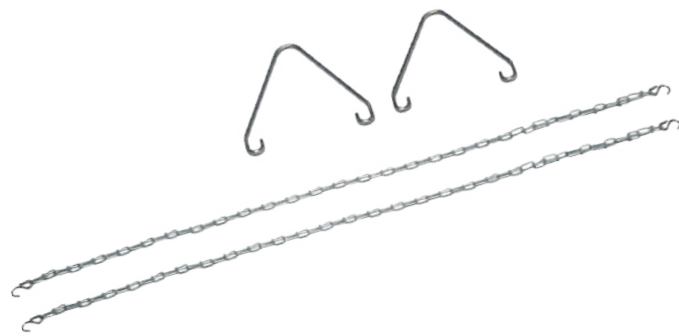


ACCESSORIES

MOUNTING BRACKETS for LED LINIER HIGH BAY

This fixture has three different mounting options: suspended, surface and pendant. It can easily be suspended using the included chains and V-hook. Surface and pendant mount brackets are also available (sold separately).

SUSPENDED MOUNT KIT
INCLUDED



HS-M10

SURFACE MOUNT BRACKET



SMB1-WHB5

PENDANT MOUNT BRACKET



PMB1-WHB5

HOW TO CHOOSE A SENSOR

MICROWAVE MOTION SENSORS



MW (Microwave) motion sensors — use the Doppler effect by emitting microwaves and analyzing their reflections from moving objects. They offer high sensitivity, can detect movement through glass and plastic.

✓ **RECOMMENDED
LOCATIONS**

Places where detecting the movement of objects is a high priority. Installation heights less than 49ft.

✗ **NOT
RECOMMENDED
LOCATIONS**

Places with metal shelves — will reflect microwave signal.
Places with Wi-Fi signal interference.
Places with vibration from air ventilation or other reason.
Places with electric fan.
Places higher than 49ft height.
Installation close to thin wall/glass doors.

INFRARED MOTION SENSORS



PIR (Passive Infrared) motion sensors — detect movement by sensing infrared radiation changes, distinguishing temperature differences between moving objects and the environment.

✓ **RECOMMENDED
LOCATIONS**

Places where the temperature of the environment is well controlled. Places where detecting the movement of people is a high priority.

✗ **NOT
RECOMMENDED
LOCATIONS**

Places where environment temp close to human body.
Places where PIR sensor lens can get covered.
Places higher than 39ft (unless you use 50ft PIR).



Q-BASE MOTION SENSORS

The field-installed Motion Sensor ensures higher energy savings and provides increased light control. Two types of Motion Sensors – Microwave and Infrared– are available to match different environmental conditions.

Sensor with 3 pin base is ideal solution for linear and UFO high bay lights. IP65 housing ensures operation in wet locations.

MICROWAVE MOTION SENSOR

INFRARED MOTION SENSOR



ADJUST SENSOR SETTINGS WITH SWITCHES

SETTINGS	ADJUSTMENT
Holdtime	5s - 10min
Stand-by dimming level	0 - 50%

ROTATION SWITCH



REMOTE CONTROL



ADJUST SENSOR SETTINGS WITH REMOTE CONTROL

SETTINGS	ADJUSTMENT	DEFAULT
Detection area	25%-100%	100%
Holdtime	5s - 120min	10min
Daylight threshold	2 - 400lux	DIASBLE
Stand-by dimming level	0 - 50%	10%
Stand-by period	0s ± ∞	0s

UP TO
50 FEET
INSTALLATION
HEIGHT

INFRARED MOTION SENSOR



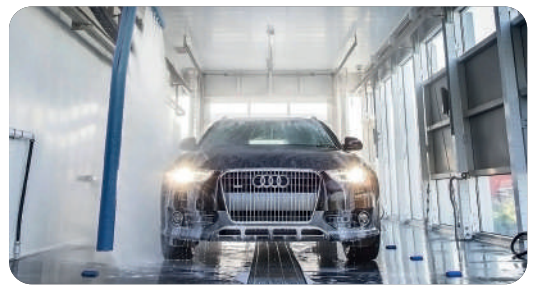
ADVANCED DEVICE CONTROL



INSTALLATION HEIGHT UP TO 50FT



WET LOCATION RATED










SENSOR IS OFF WHEN IN EM MODE





REMOTE CONTROL

ASD-06RC

ON/OFF	ON/OFF turn on / turn off
Scenes	SCENES Shows current settings saved in remote
Apply	APPLY Applies current scene settings to the fixture
	DETECTION RANGE Also known as "sensitivity", 100 % means the highest sensitivity and longest distance. Use this button and the +/- buttons to adjust
	HOLD TIME The period that light will stay illuminated 100 % after no motion is detected. Use this button and the +/- buttons to adjust
CCT	CCT SELECTABLE Not applicable to this product
	RESERVED BUTTON Not applicable to this product

Auto	AUTO Enter "sensor mode" and perform previous settings
Start	START Press this to begin scene setup
M H	MOUNTING HEIGHT Adjust detection area/ sensitivity levels according to real installation situations, higher or lower
	DAYLIGHT SENSOR The preset lux level at which motion will be detected. Use this button and the +/- buttons to adjust
	UP The main functional buttons to adjust the factors to desired level. Press +/- button to dim light directly Auto in non-detection mode
	DOWN The main functional buttons to adjust the factors to desired level. Press +/- button to dim light directly Auto in non-detection mode
	DAYLIGHT HARVESTING Daylight harvesting function enabled or disabled

Reset	RESET Enter "sensor mode" and perform the default settings
Memory	MEMORY Saves the scene settings
Send	SEND Memorize and send out the previous setting of individual parameters
	STAND-BY DIMMING After hold time, the light will dim from 100 % to optional standby dimming levels. Use this button and the +/- buttons to adjust
	STAND-BY PERIOD The period after holdtime, during which the light keeps standby dimming level. Use this button and the +/- buttons to adjust
POWER	POWER Adjust brightness in both ON/OFF mode & sensor mode, minimum 10%, max 100%, each time this button is pressed it changes by 5%
Test	TEST BUTTON Press this button to test the sensor; it will temporarily change the hold time to 2s. This setting cannot be saved



One remote can control both types of Motion Sensor, in addition to giving you access to lighting and brightness settings, expanding the capabilities of the fixture.

All models have a built-in daylight sensor that automatically turns the fixture on and off depending on the ambient light level.

UHB2A-ST WITH Q-BASE

LED UFO HIGH BAY



ASD-UHS-MV-100N50-5CP-BK-6P



ASD-UHS-MV-150N50-5CP-BK-6P



ASD-UHS-MV-200N50-5CP-BK-6P



ASD-UHB2A-ST-150BK
ASD-UHB2AHV-ST-150BK



ASD-UHB2A-ST-150WH



ASD-UHB2A-ST-200BK
ASD-UHB2A-ST-240BK
ASD-UHB2AHV-ST-200BK
ASD-UHB2AHV-ST-240BK



ASD-UHB2A-ST-200WH
ASD-UHB2A-ST-240WH



ASD-UHB2A-ST-300WH



ASD-UHB2A-ST-300BK
ASD-UHB2AHV-ST-300BK



ASD-UHB2A-ST-500BK



ASD-UHB2AHV-ST-500BK



ASD-UHB2AHV-ST-750BK



ASD-UHB2AHV-ST-1000BK



ASD-UHB2A-ST-200BK-BA



ASD-UHB2A-ST-240BK-BA

UFO SLIM SERIES

MODEL	WATTS	INPUT VOLTAGE	DIMMABLE	CCT	LM	FINISH	DIMENSIONS LxWxH	PCS. PER CARTON	CERTIFICATION
ASD-UHS-MV-100N50-5CP-BK-6P	100W	120-277V	-	5000K	12014	Black	10 1/4" x 10 1/4" x 2 7/8"	6	ETL
ASD-UHS-MV-150N50-5CP-BK-6P	150W	120-277V	-	5000K	17966	Black	11 5/8" x 11 5/8" x 2 7/8"	6	ETL
ASD-UHS-MV-200N50-5CP-BK-6P	200W	120-277V	-	5000K	23888	Black	12 13/16" x 12 13/16" x 2 7/8"	6	ETL

UHB2A-ST SERIES

MODEL	WATTS	INPUT VOLTAGE	DIMMABLE	CCT	LM	FINISH	DIMENSIONS LxWxH	PCS. PER CARTON	CERTIFICATION
ASD-UHB2A-ST-150BK	100/120/150W	120-277V	0-10V	3000/4000/5000K	23610	Black	10 1/4" x 10 1/4 x 4 11/16"	1	UL / DLC PRM
ASD-UHB2A-ST-150WH	100/120/150W	120-277V	0-10V	3000/4000/5000K	23610	White	10 1/4" x 10 1/4 x 4 11/16"	1	UL / DLC PRM
ASD-UHB2A-ST-200BK	100/150/200W	120-277V	0-10V	3000/4000/5000K	31946	Black	11 5/8" x 11 5/8 x 4 13/16"	1	UL / DLC PRM
ASD-UHB2A-ST-200WH	100/150/200W	120-277V	0-10V	3000/4000/5000K	31946	White	11 5/8" x 11 5/8 x 4 13/16"	1	UL / DLC PRM
ASD-UHB2A-ST-240BK	150/200/240W	120-277V	0-10V	3000/4000/5000K	37646	Black	11 5/8" x 11 5/8 x 5"	1	UL / DLC PRM
ASD-UHB2A-ST-240WH	150/200/240W	120-277V	0-10V	3000/4000/5000K	37646	White	11 5/8" x 11 5/8 x 5"	1	UL / DLC PRM
ASD-UHB2A-ST-300BK	200/240/300W	120-277V	0-10V	3000/4000/5000K	47788	Black	12 5/8" x 12 5/8 x 5 3/16"	1	UL / DLC PRM
ASD-UHB2A-ST-300WH	200/240/300W	120-277V	0-10V	3000/4000/5000K	47788	White	12 5/8" x 12 5/8 x 5 3/16"	1	UL / DLC PRM
ASD-UHB2A-ST-500BK	300/400/500W	120-277V	0-10V	3000/4000/5000K	78273	Black	14 7/16" x 14 7/16 x 7 1/8"	1	UL / DLC PRM
ASD-UHB2AHV-ST-150BK	100/120/150W	200-480V	0-10V	3000/4000/5000K	23638	Black	10 1/4" x 10 1/4 x 4 11/16"	1	UL / DLC PRM
ASD-UHB2AHV-ST-200BK	100/150/200W	200-480V	0-10V	3000/4000/5000K	31946	Black	11 5/8" x 11 5/8 x 4 13/16"	1	UL / DLC PRM
ASD-UHB2AHV-ST-240BK	150/200/240W	200-480V	0-10V	3000/4000/5000K	37738	Black	11 5/8" x 11 5/8 x 5"	1	UL / DLC PRM
ASD-UHB2AHV-ST-300BK	200/240/300W	200-480V	0-10V	3000/4000/5000K	48935	Black	12 5/8" x 12 5/8 x 5 3/16"	1	UL / DLC PRM
ASD-UHB2AHV-ST-500BK	300/400/500W	200-480V	0-10V	3000/4000/5000K	77718	Black	14 9/16" x 14 9/16 x 8 1/16"	1	UL / DLC PRM
ASD-UHB2AHV-ST-750BK	500/600/750W	200-480V	0-10V	3000/4000/5000K	120692	Black	18 3/16" x 16 7/16 x 19"	1	UL / DLC PRM
ASD-UHB2AHV-ST-1000BK	500/750/1000W	200-480V	0-10V	3000/4000/5000K	166268	Black	18 3/16" x 16 7/16 x 24 5/8"	1	UL / DLC PRM

UHB2A-ST-BA SERIES

MODEL	WATTS	INPUT VOLTAGE	DIMMABLE	CCT	LM	FINISH	DIMENSIONS LxWxH	PCS. PER CARTON	CERTIFICATION
ASD-UHB2A-ST-200BK-BA	100/150/200W	120-277V	0-10V	3500/4000/5000K	33429	Black	12 5/8" x 12 5/8" x 6 7/16"	1	UL / DLC PRM
ASD-UHB2A-ST-240BK-BA	150/200/240W	120-277V	0-10V	3500/4000/5000K	39166	Black	12 13/16" x 12 13/16" x 6 9/16"	1	UL / DLC PRM

UHB2A-ST WITH Q-BASE

ACCESSORIES



BLD-RM40R
BLD-RM60R



BLD-GM60R-HV



RN1



ASD-EMB40
ASD-EMB60

BATTERY BACK-UP KITS

ACCESSORIES	MODEL	APPLICABLE MODELS	WATTS	INPUT VOLTAGE	DIMENSIONS LxWxH	PCS. PER CARTON
40W BATTERY BACK-UP KIT	BLD-RM40R	UHB2A ST 150-300W	40W	120-277V	15-11/16" x 15-11/16" x 5-9/16"	4
60W BATTERY BACK-UP KIT	BLD-RM60R	UHB2A ST 150-500W	60W	120-277V	15-11/16" x 5-3/4" x 5-3/4"	4
60W BATTERY BACK-UP KIT HIGH VOLTAGE	BLD-GM60R-HV	UHB2A ST 150-500W	60W	277-480V	14-1/2" x 3-1/16" x 1-7/8"	5
40W BATTERY BACK-UP KIT	ASD-EMB40	UHB2A ST 150-300W	40W	120-277V	8-3/8" x 5-3/16" x 4-13/16"	6
60W BATTERY BACK-UP KIT	ASD-EMB60	UHB2A ST 150-500W	60W	120-277V	8-3/8" x 5-3/16" x 4-13/16"	6
REMOTE TEST SWITCH FOR BATTERY BACK-UP	RN1		-	-	5-1/8" x 1-1/4" x 5/8"	50

LENSES

MODEL	APPLICABLE MODELS	FINISH	DIMENSIONS LxWxH	PCS. PER CARTON
ASD-L60C-UHB2A	UHB2A-ST 150-240W	Clear	8 11/16" x 8 11/16" x 7/16"	20
ASD-L60E-UHB2A	UHB2A-ST 500W	Clear	13 15/16" x 13 15/16" x 5/16"	20
ASD-L120B-UHB2A	UHB2A-ST 150-240W	Clear	11 5/16" x 11 5/16" x 9/16"	20
ASD-L60D-UHB2A	UHB2A-ST 300W	Clear	10 13/16" x 10 13/16" x 7/16"	20

MOUNTING BRACKETS & HOOKS

ACCESSORIES	MODEL	APPLICABLE MODELS	FINISH	DIMENSIONS LxWxH	PCS. PER CARTON
SPRING HOOK M10	ASD-H-M10	UHB2A-ST 150-300W, UHB2AHV-ST 150-300W	Metallic	3-5/16" x 2-1/16" x 7/8"	50
SPRING HOOK M12	ASD-H-M12	UHB2A-ST 500W, UHB2AHV-ST 500W	Metallic	3-1/2" x 2-5/16" x 1"	50
SCREW-BOLT HOOK M10	ASD-HS-M10	UHB2A-ST 150-300W, UHB2AHV-ST 150-300W	Black	3-7/8" x 1-5/8" x 1-5/16"	50
PENDANT MOUNT BRACKET	ASD-PMB-UHB	UHB2A-ST 150-500W, UHB2AHV-ST 150-300W	Black	2-3/8" x 1-9/16" x 2-13/16"	50
PENDANT MOUNT BRACKET WITH J-BOX	ASD-PMBJB-UHB	UHB2A-ST 150-500W, UHB2AHV-ST 150-300W	Black	4-3/4" x 5-1/16" x 7-3/16"	20
SURFACE MOUNT BRACKETS	ASD-SMB-UHB2A-BK	UHB2A-ST 150-300W, UHB2AHV-ST 150-300W,	Black	10-5/8" x 10-5/8" x 8-1/4"	20
SURFACE MOUNT BRACKETS	ASD-SMB-UHB2A-WH	UHB2A-ST 150-300W, UHB2AHV-ST 150-300W	White	10-5/8" x 10-5/8" x 8-1/4"	20



ASD-H-M10
ASD-H-M12



ASD-HS-M10



ASD-PMB-UHB



ASD-PMBJB-UHB



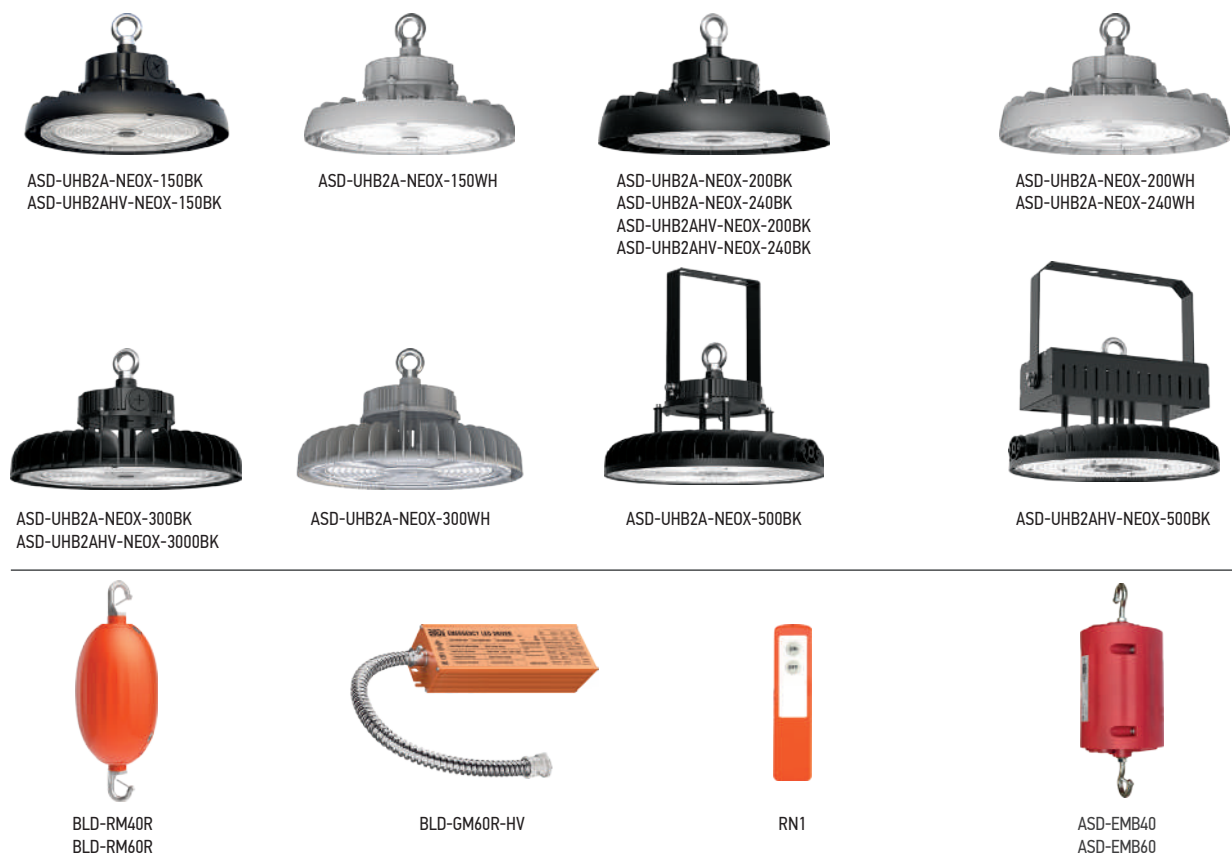
ASD-SMB-UHB2A-BK



ASD-SMB-UHB2A-WH

UHB2A-NEOX WITH Q-BASE

LED UFO HIGH BAY



UHB2A-NEOX SERIES

MODEL	WATTS	INPUT VOLTAGE	DIMMABLE	CCT	LM	FINISH	DIMENSIONS LxWxH	PCS. PER CARTON	CERTIFICATION
ASD-UHB2A-NEOX-150BK	100/120/150W	120-277	0-10V	3000/4000/5000K	28,675 lm	Black	10 1/4" x 10 1/4" x 4 11/16"	1	UL / DLC PRM
ASD-UHB2A-NEOX-150WH	100/120/150W	120-277	0-10V	3000/4000/5000K	28,675 lm	White	10 1/4" x 10 1/4" x 4 11/16"	1	UL / DLC PRM
ASD-UHB2A-NEOX-200BK	100/150/200W	120-277	0-10V	3000/4000/5000K	38,677 lm	Black	11 5/8" x 11 5/8" x 4 13/16"	1	UL / DLC PRM
ASD-UHB2A-NEOX-200WH	100/150/200W	120-277	0-10V	3000/4000/5000K	38,677 lm	White	11 5/8" x 11 5/8" x 4 13/16"	1	UL / DLC PRM
ASD-UHB2A-NEOX-240BK	150/200/240W	120-277	0-10V	3000/4000/5000K	45,642 lm	Black	11 5/8" x 11 5/8" x 5"	1	UL / DLC PRM
ASD-UHB2A-NEOX-240WH	150/200/240W	120-277	0-10V	3000/4000/5000K	45,642 lm	White	11 5/8" x 11 5/8" x 5"	1	UL / DLC PRM
ASD-UHB2A-NEOX-300BK	200/240/300W	120-277	0-10V	3000/4000/5000K	57,249 lm	Black	12 5/8" x 12 5/8" x 5 3/16"	1	UL / DLC PRM
ASD-UHB2A-NEOX-300WH	200/240/300W	120-277	0-10V	3000/4000/5000K	57,249 lm	White	12 5/8" x 12 5/8" x 5 3/16"	1	UL / DLC PRM
ASD-UHB2A-NEOX-500BK	300/400/500W	120-277	0-10V	3000/4000/5000K	95,160 lm	Black	14 7/16" x 14 7/16" x 7 1/8"	1	UL / DLC PRM
ASD-UHB2AHV-NEOX-150BK	100/120/150W	120-277	0-10V	3000/4000/5000K	28,675 lm	Black	10 1/4" x 10 1/4" x 4 11/16"	1	UL / DLC PRM
ASD-UHB2AHV-NEOX-200BK	100/150/200W	120-277	0-10V	3000/4000/5000K	38,677 lm	Black	11 5/8" x 11 5/8" x 4 13/16"	1	UL / DLC PRM
ASD-UHB2AHV-NEOX-240BK	150/200/240W	120-277	0-10V	3000/4000/5000K	45,642 lm	Black	11 5/8" x 11 5/8" x 5"	1	UL / DLC PRM
ASD-UHB2AHV-NEOX-300BK	200/240/300W	120-277	0-10V	3000/4000/5000K	57,249 lm	Black	12 5/8" x 12 5/8" x 5 3/16"	1	UL / DLC PRM
ASD-UHB2AHV-NEOX-500BK	300/400/500W	120-277	0-10V	3000/4000/5000K	95,351 lm	Black	14 9/16" x 14 9/16" x 8 1/16"	1	UL / DLC PRM

BATTERY BACK-UP KITS

ACCESSORIES	MODEL	APPLICABLE MODELS	WATTS	INPUT VOLTAGE	DIMENSIONS LxWxH	PCS. PER CARTON
40W BATTERY BACK-UP KIT	BLD-RM40R	UHB2A NEOX 150-300W	40W	120-277V	15-11/16" x 15-11/16" x 5-9/16"	4
60W BATTERY BACK-UP KIT	BLD-RM60R	UHB2A NEOX	60W	120-277V	15-11/16" x 5-3/4" x 5-3/4"	4
60W BATTERY BACK-UP KIT HIGH VOLTAGE	BLD-GM60R-HV	UHB2A NEOX 150-300W	60W	277-480V	14-1/2" x 3-1/16" x 1-7/8"	5
40W BATTERY BACK-UP KIT	ASD-EMB40	UHB2A NEOX 150-300W	40W	120-277V	8-3/8" x 5-3/16" x 4-13/16"	6
60W BATTERY BACK-UP KIT	ASD-EMB60	UHB2A NEOX	60W	120-277V	8-3/8" x 5-3/16" x 4-13/16"	6
REMOTE TEST SWITCH FOR BATTERY BACK-UP	RN1		-	-	5-1/8" x 1-1/4" x 5/8"	50

LENSES

MODEL	APPLICABLE MODELS	FINISH	DIMENSIONS LxWxH	PCS. PER CARTON
ASD-L60C-UHB2A	UHB2A-NEOX 150-240W	Clear	8 11/16" x 8 11/16" x 7/16"	20
ASD-L60B-UHB2A	UHB2A-NEOX 300W	Clear	11 5/16" x 11 5/16" x 1/2"	20
ASD-L60E-UHB2A	UHB2A-NEOX 500W	Clear	13 15/16" x 13 15/16" x 5/16"	20
ASD-L60F-UHB2A	UHB2A-NEOX 750-1000W	Clear	16 10/16" x 16 10/16" x 6/16"	10
ASD-L120B-UHB2A	UHB2A-NEOX 150-240W	Clear	11 5/16" x 11 5/16" x 9/16"	20
ASD-L120A-UHB2A	UHB2A-NEOX 300W	Clear	9 15/16" x 9 15/16" x 9/16"	20

MOUNTING BRACKETS & HOOKS

ACCESSORIES	MODEL	APPLICABLE MODELS	FINISH	DIMENSIONS LxWxH	PCS. PER CARTON
SPRING HOOK M10	ASD-H-M10	UHB2A-NEOX 150-300W, UHB2AHV-NEOX 150-300W	Metallic	3-5/16" x 2-1/16" x 7/8"	50
SPRING HOOK M12	ASD-H-M12	UHB2A-NEOX 500W, UHB2AHV-NEOX 500W	Metallic	3-1/2" x 2-5/16" x 1"	50
SCREW-BOLT HOOK M10	ASD-HS-M10	UHB2A-NEOX 150-300W, UHB2AHV-NEOX 150-300W	Black	3-7/8" x 1-5/8" x 1-5/16"	50
PENDANT MOUNT BRACKET	ASD-PMB-UHB	UHB2A-NEOX 150-300W, UHB2AHV-NEOX 150-300W	Black	2-3/8" x 1-9/16" x 2-13/16"	50
PENDANT MOUNT BRACKET WITH J-BOX	ASD-PMBJB-UHB	UHB2A-NEOX 150-300W, UHB2AHV-NEOX 150-300W	Black	4-3/4" x 5-1/16" x 7-3/16"	20
SURFACE MOUNT BRACKETS	ASD-SMB-UHB2A-BK	UHB2A-NEOX 150-300W, UHB2AHV-NEOX 150-300W	Black	10-5/8" x 10-5/8" x 8-1/4"	20
SURFACE MOUNT BRACKETS	ASD-SMB-UHB2A-WH	UHB2A-NEOX 150-300W, UHB2AHV-NEOX 150-300W	White	10-5/8" x 10-5/8" x 8-1/4"	20

WHB5B-ST WITH Q-BASE

LED UFO HIGH BAY



WHB5B-ST SERIES

MODEL	WATTS	INPUT VOLTAGE	DIMMABLE	CCT	LM	FINISH	DIMENSIONS LxWxH	PCS. PER CARTON	CERTIFICATION
ASD-WHB5B-ST-100	60/80/100W	120-277V	0-10V	3500/4000/5000K	16366	White	14 15/16" x 9 13/16" x 2 15/16"	1	UL / DLC PRM
ASD-WHB5B-ST-160	100/130/160W	120-277V	0-10V	3500/4000/5000K	25522	White	14 15/16" x 9 13/16" x 2 15/16"	1	UL / DLC PRM
ASD-WHB5B-ST-220	130/160/220W	120-277V	0-10V	3500/4000/5000K	36274	White	17 11/16" x 12 7/16" x 2 15/16"	1	UL / DLC PRM
ASD-WHB5B-ST-320	160/220/320W	120-277V	0-10V	3500/4000/5000K	52194	White	20 1/2" x 14 7/16" x 3 1/4"	1	UL / DLC PRM
ASD-WHB5B-ST-500	320/400/500W	120-277V	0-10V	3500/4000/5000K	76668	White	35 1/2" x 12 7/16" x 2 15/16"	1	UL / DLC PRM
ASD-WHB5B-ST-750	500/650/750W	120-277V	0-10V	3500/4000/5000K	114459	White	41" x 14 7/16" x 3 1/4"	1	UL / DLC PRM
ASD-WHB5BHV-ST-220	130/160/220W	200-480V	0-10V	3500/4000/5000K	34386	White	17 11/16" x 12 7/16" x 2 15/16"	1	UL / DLC PRM
ASD-WHB5BHV-ST-320	160/220/320W	200-480V	0-10V	3500/4000/5000K	51262	White	20 1/2" x 14 7/16" x 3 1/4"	1	UL / DLC PRM
ASD-WHB5BHV-ST-500	320/400/500W	200-480V	0-10V	3500/4000/5000K	78609	White	35 1/2" x 12 7/16" x 2 15/16"	1	UL / DLC PRM

WHB5B-CP-ST SERIES

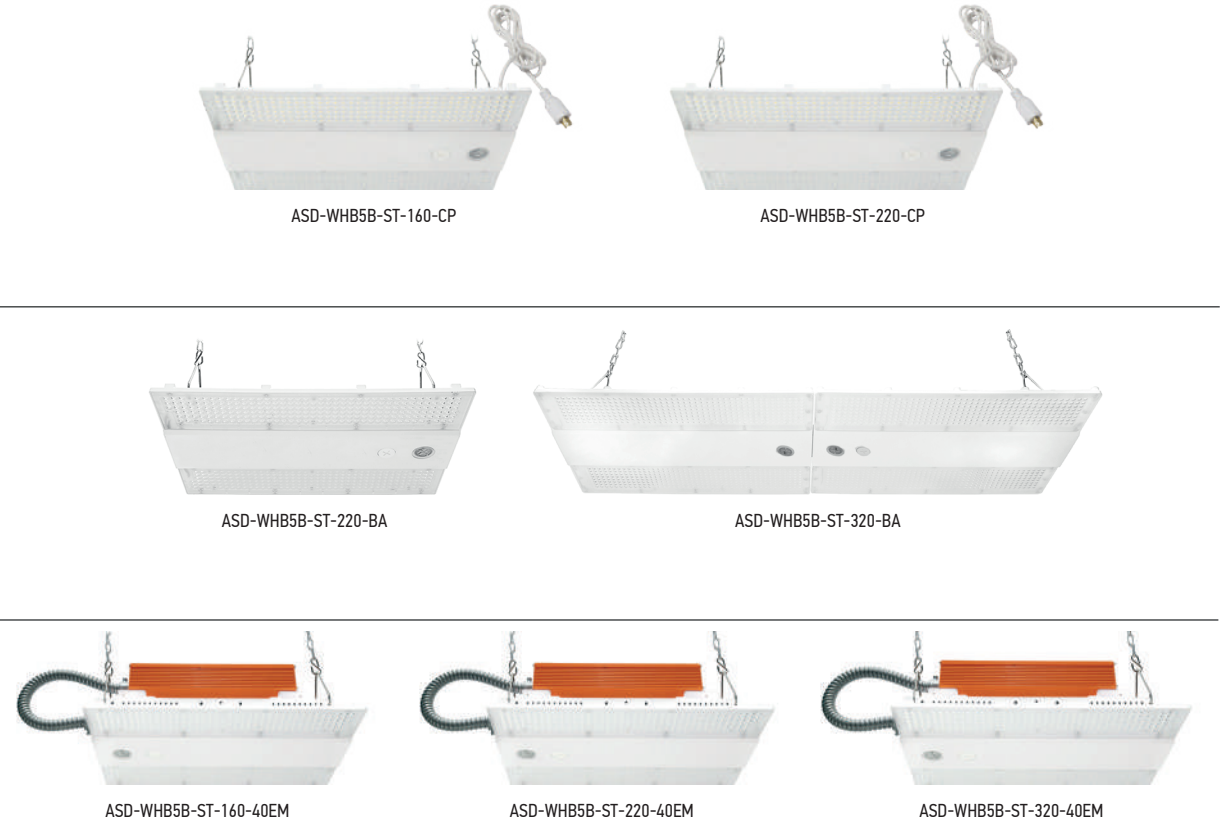
MODEL	WATTS	INPUT VOLTAGE	DIMMABLE	CCT	LM	FINISH	DIMENSIONS LxWxH	PCS. PER CARTON	CERTIFICATION
ASD-WHB5B-ST-160-CP	100/130/160W	120-277V	0-10V	3500/4000/5000K	25522	White	14 15/16" x 9 13/16" x 2 15/16"	1	UL / DLC PRM
ASD-WHB5B-ST-220-CP	130/160/220W	120-277V	0-10V	3500/4000/5000K	36274	White	17 11/16" x 12 7/16" x 2 15/16"	1	UL / DLC PRM

WHB5B-BA-ST SERIES

MODEL	WATTS	INPUT VOLTAGE	DIMMABLE	CCT	LM	FINISH	DIMENSIONS LxWxH	PCS. PER CARTON	CERTIFICATION
ASD-WHB5B-ST-220-BA	130/160/220W	120-277V	0-10V	3500/4000/5000K	35071	White	23 7/8" x 13 1/8" x 2 15/16"	1	UL / DLC PRM
ASD-WHB5B-ST-320-BA	160/220/320W	120-277V	0-10V	3500/4000/5000K	52028	White	33 1/8" x 13 1/8" x 2 15/16"	1	UL / DLC PRM

WHB5B-EM-ST SERIES

MODEL	WATTS	INPUT VOLTAGE	DIMMABLE	CCT	LM	FINISH	DIMENSIONS LxWxH	PCS. PER CARTON	CERTIFICATION
ASD-WHB5B-ST-160-40EM	100/130/160W	120-277V	0-10V	3500/4000/5000K	25522	White	14 15/16" x 9 13/16" x 5 9/16"	1	UL / DLC PRM
ASD-WHB5B-ST-220-40EM	130/160/220W	120-277V	0-10V	3500/4000/5000K	36274	White	14 15/16" x 9 13/16" x 5 9/16"	1	UL / DLC PRM
ASD-WHB5B-ST-320-40EM	160/220/320W	120-277V	0-10V	3500/4000/5000K	52194	White	20 1/2" x 14 7/16" x 5 9/16"	1	UL / DLC PRM



WHB5B-ST WITH Q-BASE

ACCESSORIES



ASD-EMK20W-WHB5B
ASD-EMK30W-WHB5A



ASD-PMB1-WHB5



ASD-SMB1-WHB5

BATTERY BACK-UP KITS

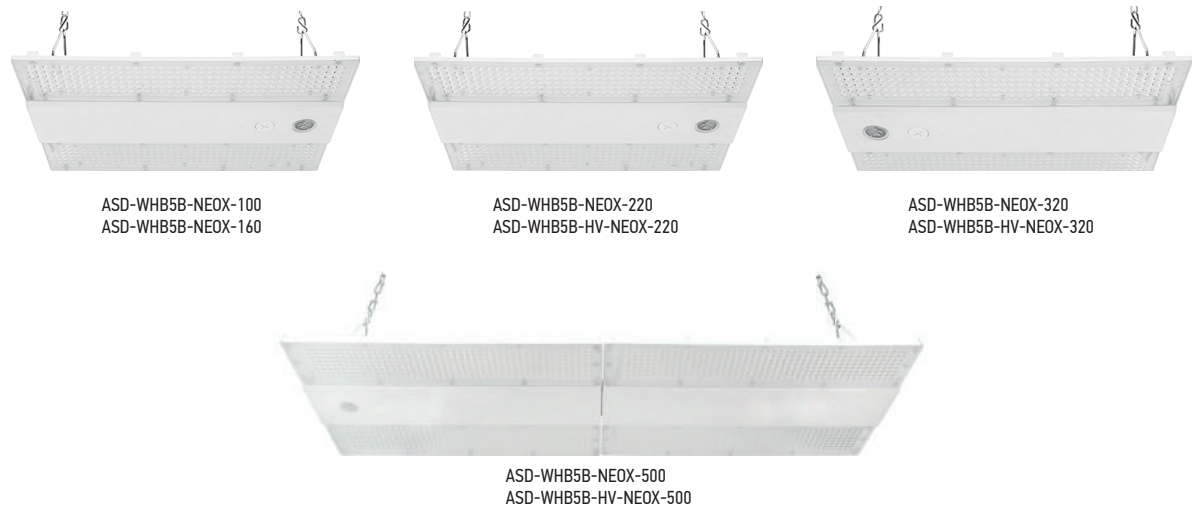
ACCESSORIES	MODEL	APPLICABLE MODELS	WATTS	INPUT VOLTAGE	DIMENSIONS LxWxH	PCS. PER CARTON
20W BATTERY BACK-UP KIT	ASD-EMK20W-WHB5B	WHB5B-NEOX 100-500W	20W	120-277V	9-5/8" × 4-5/8" × 1-7/8"	10
30W BATTERY BACK-UP KIT	ASD-EMK30W-WHB5A	WHB5B-NEOX 100-500W	30W	120-277V	9-5/8" × 4-5/8" × 1-7/8"	10

MOUNTING BRACKETS

ACCESSORIES	MODEL	APPLICABLE MODELS	DIMENSIONS LxWxH	PCS. PER CARTON
PENDANT MOUNT BRACKET	ASD-PMB1-WHB5	WHB5B-NEOX 100-500W, WHB5BHV-NEOX 220-500W	4" x 3 11/16" x 3 1/8"	50
SURFACE MOUNT BRACKET	ASD-SMB1-WHB5	WHB5B-NEOX 100-500W, WHB5BHV-NEOX 220-500W	4" x 3 11/16" x 3 1/16"	50

WHB5B-NEOX WITH Q-BASE

LED UFO HIGH BAY



WHB5B-NEOX SERIES

MODEL	WATTS	INPUT VOLTAGE	DIMMABLE	CCT	LM	FINISH	DIMENSIONS LxWxH	PCS. PER CARTON	CERTIFICATION
ASD-WHB5B-NEOX-100	60/80/100W	120-277	0-10V	3500/4000/5000K	19,848 lm	White	14-15/16" x 9 13/16" x 2-15/16"	1	UL / DLC PRM
ASD-WHB5B-NEOX-160	100/130/160W	120-277	0-10V	3500/4000/5000K	31,567 lm	White	14-15/16" x 9 13/16" x 2-15/16"	1	UL / DLC PRM
ASD-WHB5B-NEOX-220	130/160/220W	120-277	0-10V	3500/4000/5000K	44,871 lm	White	17-11/16" x 12-7/16" x 2-15/16"	1	UL / DLC PRM
ASD-WHB5B-NEOX-320	160/220/320W	120-277	0-10V	3500/4000/5000K	62,065 lm	White	20-1/2" x 14-7/16" x 3-1/4"	1	UL / DLC PRM
ASD-WHB5B-NEOX-500	320/400/500W	120-277	0-10V	3500/4000/5000K	93,787 lm	White	35-1/2" x 12-7/16" x 2-15/16"	1	UL / DLC PRM
ASD-WHB5B-HV-NEOX-220	130/160/220W	200-480	0-10V	3500/4000/5000K	43,158 lm	White	17-11/16" x 12-7/16" x 2-15/16"	1	UL / DLC PRM
ASD-WHB5B-HV-NEOX-320	160/220/320W	200-480	0-10V	3500/4000/5000K	62,090 lm	White	20-1/2" x 14-7/16" x 3-1/4"	1	UL / DLC PRM
ASD-WHB5B-HV-NEOX-500	320/400/500W	200-480	0-10V	3500/4000/5000K	92,896 lm	White	35-1/2" x 12-7/16" x 2-15/16"	1	UL / DLC PRM

WHB7-RGBW SERIES

MODEL	WATTS	INPUT VOLTAGE	DIMMABLE	CCT	LM	FINISH	DIMENSIONS LxWxH	PCS. PER CARTON	CERTIFICATION
ASD-WHB7-160RGBW	160W	120-277V	APP	RGBW	19105	White	23 5/8" x 11 13/16" x 2 7/8"	1	UL
ASD-WHB7-220RGBW	220W	120-277V	APP	RGBW	25574	White	32 11/16" x 11 13/16" x 3"	1	UL

BATTERY BACK-UP KITS

ACCESSORIES	MODEL	APPLICABLE MODELS	WATTS	INPUT VOLTAGE	DIMENSIONS LxWxH	PCS. PER CARTON
20W BATTERY BACK-UP KIT	ASD-EMK20W-WHB5B	WHB5B-NEOX 100-500W	20W	120-277V	9-5/8" x 4-5/8" x 1-7/8"	10
30W BATTERY BACK-UP KIT	ASD-EMK30W-WHB5A	WHB5B-NEOX 100-500W	30W	120-277V	9-5/8" x 4-5/8" x 1-7/8"	10

MOUNTING BRACKETS

ACCESSORIES	MODEL	APPLICABLE MODELS	DIMENSIONS LxWxH	PCS. PER CARTON
PENDANT MOUNT BRACKET	ASD-PMB1-WHB5	WHB5B-NEOX 100-500W, WHB5BHV-NEOX 220-500W	4" x 3 11/16" x 3 1/8"	50
SURFACE MOUNT BRACKET	ASD-SMB1-WHB5	WHB5B-NEOX 100-500W, WHB5BHV-NEOX 220-500W	4" x 3 11/16" x 3 1/16"	50

Q-BASE

MOTION SENSORS

MOTION SENSORS

SENSOR	MODEL	APPLICABLE MODELS	IMPUT VOLTAGE	FINISH	DIMENSIONS LXWXH	PCS. PER CARTON
INFRARED MOTION SENSOR	ASD-09IR-BK	UHB2A all models, UHB2A -PRO all models, WHB5B all models, WHB5A-PRO all models	12V	Black	2-1/8" × 2-1/8" × 1-11/16"	120
	ASD-09IR-WH		12V	White	2-1/8" × 2-1/8" × 1-11/16"	120
	ASD-09IR50-WH		12V	White	2-1/8" × 2-1/8" × 1-11/16"	120
MICROWAVE MOTION SENSOR	ASD-09MW-BK		12V	Black	2-1/8" × 2-1/8" × 1-11/16"	120
	ASD-09MW-WH		12V	White	2-1/8" × 2-1/8" × 1-11/16"	120
REMOTE CONTROL FOR MOTION SENSOR	ASD-06RC		-	-	5-11/16" × 1-3/4" × 13/16"	60

Infrared Motion Sensors



ASD-09IR-BK ASD-09IR-WH ASD-09IR50-WH

Microwave Motion Sensors



ASD-09IR-BK ASD-09IR-WH

Remote Control for Motion Sensor



ASD-06RC



ASD LIGHTING CORP

ASD Lighting Corp has become one of the leading LED lighting brands in the United States for commercial and residential applications.



QUALITY

For the production of ASD Luminaires we carefully choose the highest quality components to ensure efficiency and longevity.



LOGISTICS

We are constantly improving our warehouse system so that delivery and storage of ASD products is not only efficient, but also fast and convenient.



*New Standard
in Lighting!*