

Project Name:	Notes:	Date:	Type:
---------------	--------	-------	-------

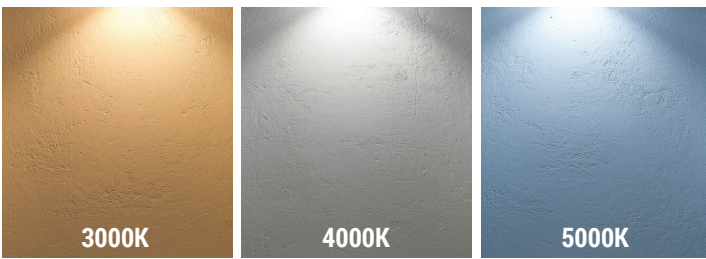
DESCRIPTION

Portor's surface mounted downlights are an ideal solution when recessed fixtures are not an option. Available in multiple apertures, the DLSM Series features color tunable technology that lets the user choose between 3000K, 4000K, or 5000K.

Ideal for drop ceilings, closets, attics, hallways, bathrooms, kitchens, basements, entry ways, porches (covered ceiling only), garages, stairwells, corridors, nursing/retirement homes, condos, elevators, apartments, and any other small areas with limited space.



TUNABLE 3-1 CCT SELECTOR



Easily flip the switch for desired CCT. It's that simple!

FEATURES

- Edge-lit technology, with no glare or dark spots
- Instant-on
- Slim design
- Integrated LED fixtures
- LED technology fits anywhere you need general light source
- IC rated for direct contact with insulation
- Damp location rated
- Easy to install on standard J-box

DIMMING

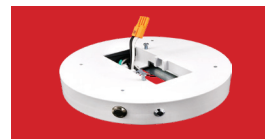
Triac dimmable down to 100%-10%.
Compatible with most major brands of dimmers.

LISTING

ETL Listed, FCC, RoHS, CE & Energy Star Listed

TECHNICAL SPECIFICATION

WATTAGE	10W / 15W / 18W / 22W
LUMENS	600 / 900 / 1100 / 1400
EFFICACY	up to 63 lm/W
VOLTAGE	120V
POWER FREQUENCY	50/60 Hz
CCT	3000K 4000K 5000K
CRI	90
BEAM ANGLE	120°
RATING	Suitable for damp locations
DIMMABLE	Triac dimming
POWER FACTOR	>0.9
WARRANTY	5 year limited



EM-DLSM-R-71 (Sold separately)

Emergency Battery Back-up for 7" LED Round Surface Mount



MODEL#	WATTS	LUMENS	LM/WATT	CCT	CRI	VOLTAGE
PT-DLSM-R-5I-10W-3CCT	10W	600*	60	3000K/4000K/5000K	90	120V
PT-DLSM-R-7I-15W-3CCT	15W	900*	60			
PT-DLSM-R-9I-18W-3CCT	18W	1100*	61			
PT-DLSM-R-12I-22W-3CCT	22W	1400*	63			

*Default @ 3000K

Project Name:	Notes:	Date:	Type:
---------------	--------	-------	-------



Easily flip the switch for desired CCT



• Sealing gasket standard

AVAILABLE TRIM OPTIONS (Sold separately)



Black



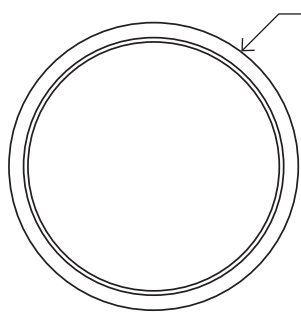
Bronze



Brush Nickel

TRIMS ARE ONLY AVAILABLE ON THE 5", 7", AND 9" MODEL

DIMENSION



A (Diameter)



MODEL#	A	B
PT-DLSM-R-5I	5.4"	.67"
PT-DLSM-R-7I	8"	.67"
PT-DLSM-R-9I	9"	.67"
PT-DLSM-R-12I	12"	1"

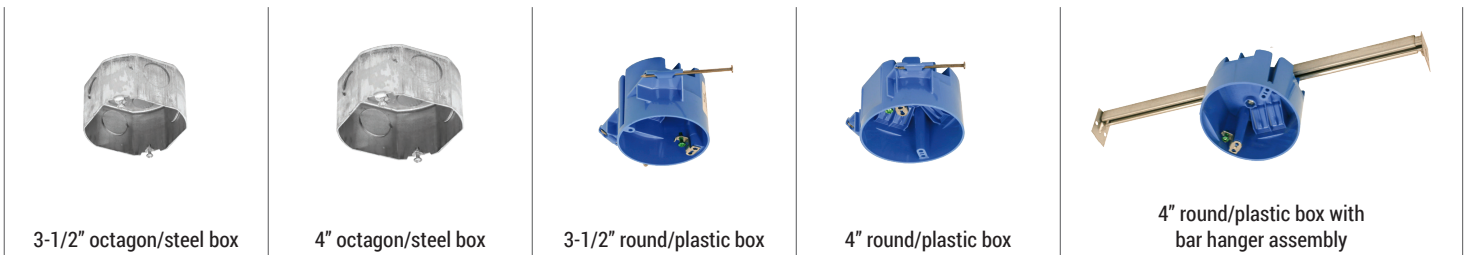
RECOMMENDED DIMMER

LUTRON
• PD-6WCL
• DVCL-153P
• CTCL-153P
• MACL-153M
• TGCL-153P
• LGCL-153P

LEVITON
• 6681
• 6672

MOUNTING OPTION

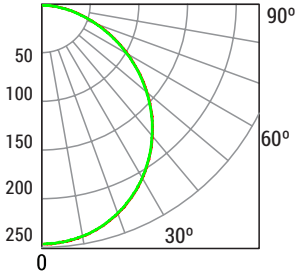
The junction boxes listed below are meant to be a reference list only. Junction box sizes may vary. It is the responsibility of the individual performing the installation to confirm that the fixture can properly and safely work with any junction box.



(For through circuit wiring applications, recommended j-box size is 2-1/8" deep)

Project Name:	Notes:	Date:	Type:
---------------	--------	-------	-------

PT-DLSM-R-5I	Wattage: 10W	Delivered lumens: 710	Efficacy: 71 lm/W	CCT: 4000K	CRI: 90
---------------------	---------------------	------------------------------	--------------------------	-------------------	----------------



UNIT: cd
 — 0/180, 113.4 — 90/270, 113.6

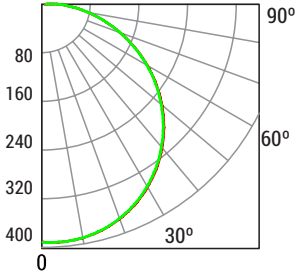
Average Beam Angle (50%) : 113.5 degree

RCR	Coefficients of Utilization								
	20%			70%			50%		
	50%	30%	10%	50%	30%	10%	50%	30%	10%
0	119	119	119	116	116	116	111	111	111
1	104	100	96	102	98	94	97	94	91
2	90	84	78	89	82	77	85	80	75
3	79	71	65	78	70	64	75	68	63
4	70	61	55	69	61	54	66	59	54
5	63	54	47	62	53	47	59	52	46
6	56	47	41	55	47	41	54	46	40
7	51	42	36	50	42	36	49	41	36
8	47	38	32	46	38	32	45	37	32
9	43	34	29	42	34	29	41	34	29
10	39	31	26	39	31	26	38	31	26

CP Summary		
	0°	90°
0°	246	246
5°	245	242
15°	237	237
25°	221	220
35°	197	197
45°	167	167
55°	130	130
65°	88	89
75°	46	46
85°	10	10
90°	.11	.11

Zonal Lumen Summary			
	Lumens	%Lamp	%Fixture
0° - 20°	90.29	12.7	12.7
0° - 30°	192.2	27	27
0° - 40°	315.7	44.4	44.4
0° - 50°	444.5	62.5	62.5
0° - 60°	561.0	78.9	78.9
0° - 70°	649.0	91.3	91.3
0° - 80°	698.6	98.3	98.3
0° - 90°	710.8	100.0	100.0

PT-DLSM-R-7I	Wattage: 15W	Delivered lumens: 1141	Efficacy: 76 lm/W	CCT: 4000K	CRI: 90
---------------------	---------------------	-------------------------------	--------------------------	-------------------	----------------



UNIT: cd
 — 0/180, 113.6 — 90/270, 113.8

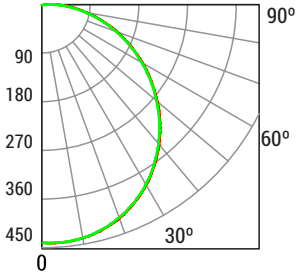
Average Beam Angle (50%) : 113.7 degree

RCR	Coefficients of Utilization								
	20%			70%			50%		
	50%	30%	10%	50%	30%	10%	50%	30%	10%
0	119	119	119	116	116	116	111	111	111
1	104	99	96	101	98	94	97	94	91
2	90	83	78	88	82	77	85	79	75
3	79	71	64	78	70	64	75	68	63
4	70	61	54	69	60	54	66	59	53
5	62	53	47	61	53	46	59	52	46
6	56	47	41	55	47	41	53	46	40
7	51	42	36	50	42	36	49	41	35
8	46	38	32	46	38	32	44	37	32
9	43	34	29	42	34	29	41	34	29
10	39	31	26	39	31	26	38	31	26

CP Summary		
	0°	90°
0°	396	396
5°	394	394
15°	380	381
25°	354	355
35°	316	318
45°	267	269
55°	209	210
65°	142	144
75°	74	76
85°	16	18
90°	.20	.22

Zonal Lumen Summary			
	Lumens	%Lamp	%Fixture
0° - 20°	145.0	12.7	12.7
0° - 30°	308.6	27	27
0° - 40°	506.8	44.4	44.4
0° - 50°	713.3	62.5	62.5
0° - 60°	900.4	78.9	78.9
0° - 70°	1042	91.3	91.3
0° - 80°	1121	98.2	98.2
0° - 90°	1142	100.0	100.0

PT-DLSM-R-9I	Wattage: 18W	Delivered lumens: 1211	Efficacy: 71 lm/W	CCT: 4000K	CRI: 90
---------------------	---------------------	-------------------------------	--------------------------	-------------------	----------------



UNIT: cd
 — 0/180, 113.9 — 90/270, 113.1

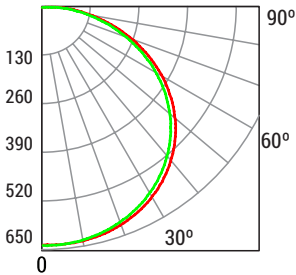
Average Beam Angle (50%) : 113.0 degree

RCR	Coefficients of Utilization								
	20%			70%			50%		
	50%	30%	10%	50%	30%	10%	50%	30%	10%
0	119	119	119	116	116	116	111	111	111
1	104	99	96	101	98	94	97	94	91
2	90	83	78	88	82	77	85	79	75
3	79	71	64	78	70	64	75	68	63
4	70	61	54	69	60	54	66	59	53
5	63	53	47	61	53	47	59	52	46
6	56	47	41	55	47	41	54	46	40
7	51	42	36	50	42	36	49	41	36
8	47	38	32	46	38	32	44	37	29
9	43	34	29	42	34	29	41	34	29
10	39	31	26	39	31	26	38	31	26

CP Summary		
	0°	90°
0°	420	420
5°	418	418
15°	404	404
25°	376	377
35°	335	336
45°	282	283
55°	219	220
65°	150	151
75°	81	82
20	20	21
90°	.22	.23

Zonal Lumen Summary			
	Lumens	%Lamp	%Fixture
0° - 20°	153.8	12.7	12.7
0° - 30°	327.2	27	27
0° - 40°	537.1	44.3	44.3
0° - 50°	755.1	62.3	62.3
0° - 60°	951.7	78.5	78.5
0° - 70°	1101	90.9	90.9
0° - 80°	1188	98	98
0° - 90°	1212	100.0	100.0

PT-DLSM-R-12I	Wattage: 22W	Delivered lumens: 1828	Efficacy: 78 lm/W	CCT: 4000K	CRI: 90
----------------------	---------------------	-------------------------------	--------------------------	-------------------	----------------



UNIT: cd
 — 0/180, 112.8 — 90/270, 112.4

Average Beam Angle (50%) : 112.6 degree

RCR	Coefficients of Utilization								
	20%			70%			50%		
	50%	30%	10%	50%	30%	10%	50%	30%	10%
0	119	119	119	116	116	116	111	111	111
1	104	100	96	102	98	94	97	94	91
2	90	84	78	89	82	77	85	80	75
3	79	71	65	78	70	64	75	68	63
4	70	61	55	69	61	54	66	59	53
5	63	54	47	62	53	47	59	52	46
6	56	47	41	55	47	41	54	46	40
7	51	42	36	50	42	36	49	41	36
8	47	38	32	46	38	32	45	37	32
9	43	35	29	42	34	29	41	34	29
10	39	31	26	39	31	26	38	31	26

CP Summary		
	0°	90°
0°	637	637
5°	634	633
15°	614	611
25°	574	568
35°	512	506
45°	431	424
55°	335	329
65°	229	225
75°	124	121
85°	31	30
90°	.38	.34

Zonal Lumen Summary			
	Lumens	%Lamp	%Fixture
0° - 20°	233.4	12.8	12.8
0° - 30°	496.7	27.2	27.2
0° - 40°	815.1	44.6	44.6
0° - 50°	1145	62.6	62.6
0° - 60°	1441	78.8	78.8
0° - 70°	1665	91.1	91.1
0° - 80°	1794	98.1	98.1
0° - 90°	1829	100.0	100.0