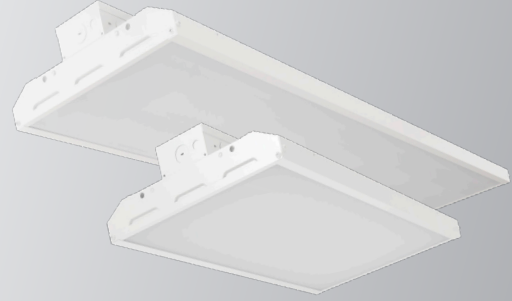


Catalog Number:	Project Name:	Note:	Date:	Type:
-----------------	---------------	-------	-------	-------

DESCRIPTION

Portor's LED Linear High Bay provides high performance efficient and quality light output. Perfect for high ceiling commercial application. Portor can also provide in-house installation solution for accessories such as for Motion Sensor or Emergency Battery Back-up. Saving additional labor cost and installation lead time.

Ideal use for commercial application such as large warehouse, parking/storage garage, gymnasium and retail stores with high ceiling.



CONSTRUCTION

Sleek slim design high bay with durable and solid form factor frame. Made out of quality aluminum alloy body with white finish.

ELECTRICAL

Luminaire is built with high efficacy LED package 120V-277V universal drivers (custom order available for 347-480V driver).

OPTICAL SYSTEM

High performance light output perfect for high ceiling. Optic lens designed to reduce glare and improve light distribution through precision lens optics.

ENERGY SAVINGS

Over 50% energy savings compare to fluorescent fixtures. Low heat production from LED technology will require overall less maintenance and operating cost.

DIMMING

Equipped with 0-10V continuous dimming.

MOUNTING

Comes standard with V-Hooks and chains, Option available for Pendant Mount.

CONTROLS

Option available for dimmers, occupancy sensors and daylight harvesting to maximize energy savings.

LISTING

UL Listed, RoHS, DLC Premium Listed

WARRANTY

5 Years Limited Warranty, Rated for 50,000 hours (See Warranty documentation for details).

	WATTAGE	DELIVERED LUMENS	EFFICACY
2'	105W	13,906	138 lm/W
	155W	20,618	138 lm/W
	210W	28,236	137 lm/W
4'	170W	23,255	139 lm/W
	300W	40,470	140 lm/W

Based on 5000K, 82 CRI. Actual lumens may vary.

TECHNICAL SPECIFICATION

CCT	4000K*, 5000K
CRI	82
DIMMABLE	0-10V Continuous Dimming (10%-100%)
BEAM ANGLE	120°
VOLTAGE	120V-277V
POWER FREQUENCY	50/60 Hz
POWER FACTOR	0.9673 (300W @ 5000K)
THD	10.62% (300W @ 5000K)
WORKING TEMPERATURE	-4°F ~ 104°F
STORAGE TEMPERATURE	-22°F ~ 140°F
IP RATING	IP40, Suitable for damp locations
WARRANTY	5 year limited



ORDERING SAMPLE: - - - - - -

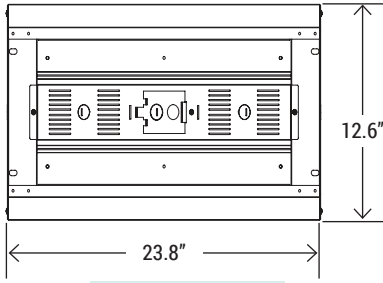
Series	Wattage	CCT
PT-HBL4 LED Linear High Bay Series	105W	40K* (4000K)
	155W	50K (5000K)
	170W	* special order required
	210W	
	300W	

Accessories/Options			
EM Battery	Sensor	Wireguard	Mounting
PT-EM1-15W* PT-EM1-30W**	PT-MHS-PR MSH-RC2	WG-HBL4-2FT WG-HBL4-4FT	Blank (Standard V-hook) PM-HBL4 SMK-HBL4

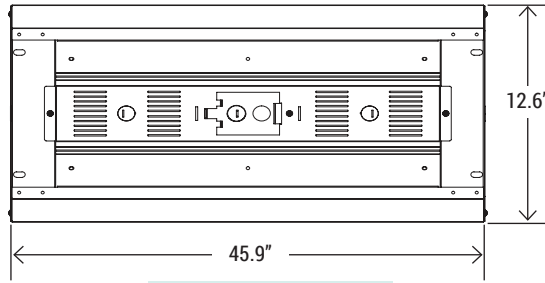
*Only works with 105W and 150W (max) / **Will work with 170w, 210w & 300W.

Catalog Number:	Project Name:	Note:	Date:	Type:
-----------------	---------------	-------	-------	-------

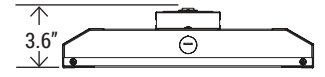
DIMENSION



2' 105W / 155W

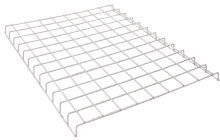


4' 170W / 210W / 300W

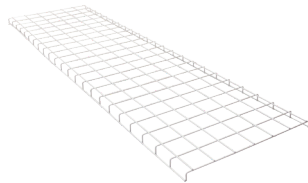


SIDE PROFILE

WIRE GUARD OPTION



WG-HBL4-2FT
Wire guard for 105W / 155W



WG-HBL4-4FT
Wire guard for 170W / 240W / 300W

MOUNTING OPTION



PM-HBL4
Pendant Mount



SMK-HBL4
Surface Mount Kit

SENSOR OPTION



PT-MSH-PR
Motion Sensor



MSH-RC2
Intelligent Control Unit

EM BATTERY OPTION



PT-EM1-15W* / PT-EM1-30W**
LED Emergency Driver

*Only works with 105W, 150W (max)
**Will work with 170W, 210W, 300W



DLC LISTING

CATALOG NUMBER	WATTAGE	DELIVERED LUMENS	EFFICACY	DLC PRODUCT ID	CLASSIFICATION
PT-HBL4-105W-50K	105W	13,906	138 lm/W	PLJWF0BII0IE	PREMIUM
PT-HBL4-155W-50K	155W	20,618	138 lm/W	PL5P5C1VE5VX	PREMIUM
PT-HBL4-170W-50K	170W	23,255	139 lm/W	PLHK65SRNPMC	PREMIUM
PT-HBL4-210W-50K	210W	28,236	137 lm/W	PLT1B2YJRFMI	PREMIUM
PT-HBL4-300W-50K	300W	40,470	140 lm/W	PL200R52MMA1	PREMIUM

Based on 5000K, 82 CRI. Actual lumens may vary.

PT-HBL4-105W

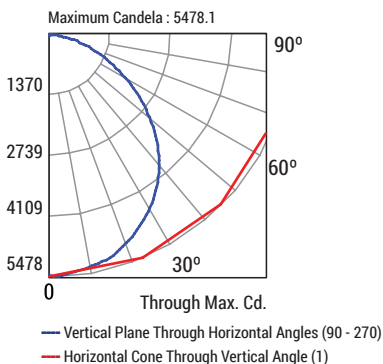
Wattage: 105W

Delivered lumens: 14176

Efficacy: 136 lm/W

CCT: 5000K

CRI: 80



pfc	Coefficients of Utilization														
	80%					70%					50%				
	pcc	pw	70%	50%	30%	10%	70%	50%	30%	10%	50%	30%	10%		
0	119	119	119	119	116	116	116	116	111	111	111				
1	109	105	101	97	107	103	99	96	98	95	92				
2	100	92	85	80	97	90	84	79	86	81	77				
3	91	81	73	67	89	80	72	66	77	70	65				
4	84	72	64	57	81	71	63	57	68	61	56				
5	77	65	56	49	75	64	55	49	61	54	49				
6	71	58	50	43	69	57	49	43	56	48	43				
7	66	53	44	38	64	52	44	38	51	43	38				
8	62	48	40	34	60	48	40	34	46	39	34				
9	58	44	36	31	56	44	36	31	43	36	31				
10	54	41	33	28	53	41	33	28	40	33	28				

CP Summary		
	0°	90°
0°	5457.6	5457.6
5°	5426.7	5421.0
15°	5221.5	5225.2
25°	4815.9	4795.3
35°	4242.1	4204.2
45°	3436.1	3411.2
55°	2490.5	2454.1
65°	1552.7	1497.6
75°	745.6	702.4
85°	162.7	132.3
90°	12.9	16.1

Zonal Lumen Summary		
	Lumens	%Fixture
0° - 20°	1983.52	14.00
0° - 30°	4190.27	29.60
0° - 40°	6817.56	48.10
0° - 60°	11656.22	82.20
0° - 80°	13941.92	98.40
0° - 90°	14118.82	99.60

